



## IN THIS ISSUE

1. Changes in the Trust Office
2. Grant & Scholarships
3. Simpson Road Property Tender
4. Housing
5. Taiiao
6. Recent events
7. Investment update
8. Important Dates and events





Papā te whatitiri, hikohiko te uira, koropupū ana ngā kareāroto e, karekare ana, ārangī ana e.

Kei te tamāhine a Hīnepūkohurangi, a Te Maunga, a Potikitikeitike, a Te Upoko i Takaia, Te Ārangī...

Pēhea rā he kupu e ea ai te oha o te ngākau? Korekore rawa e!

Mā te kete o te kākā? e kao. Mā te kōkō a te tui? e kao. Mā te kūkū a te kūkupa? E kao.

Ngā mahi nui i oti i a koe i ngā waru tau neke atu. Te whakatika ake i te whare rēhita o te iwi. Te whakarite me te toha i ngā huruhuru e rere ai ngā pīrere o te iwi.

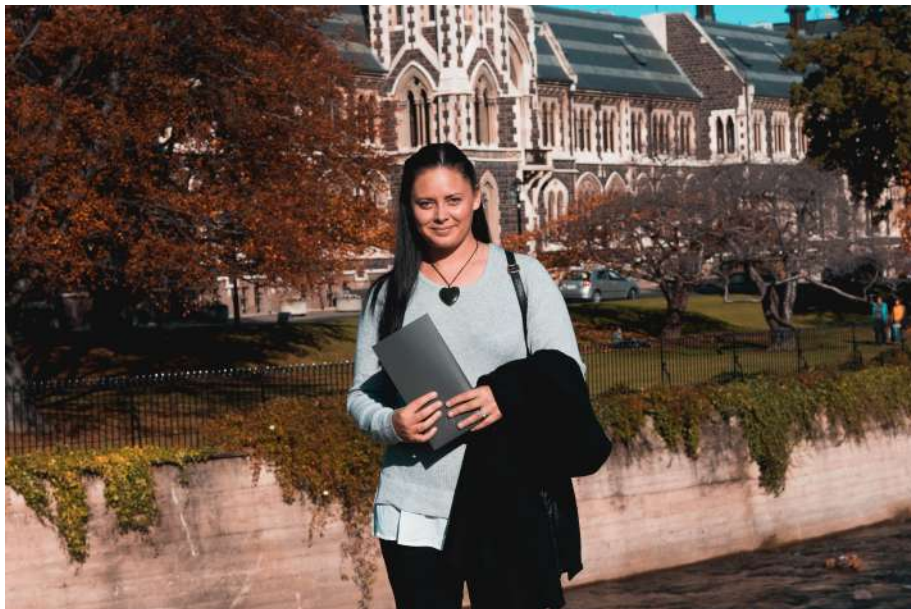
Te whiri i te taukaea ki ngā kura pūta i Te Takapū, ki ngā whare wānanga puta i te motu. Te whakarite i ngā wānanga rau. Te tāwharau i ngā pīrere kei mamao e noho ana, e ako ana, e mahi ana. Oti rā te tū hei poupu e tū ai te whare o Te Kapu o Waitaha, o Waitaha iwi tonu. Koinei hei whakarāpopototanga kau i wāhau na mahi.

Atu i tēnā, he rau tātaramoa mā tō kōkara, he rau taramea mā tō whare mahi. Kei kiia koe he ngarara, engari ka motukina koe i te rau kumara nei hei te 15 o Tihema e kainamu mai nei, ko wōu tapuwae ka mau roa, anō he whare whakairo, he whare maire ka tū ki te wao. Haere ki taumata anō, ki taumata tiketike, koi haere ki Pātakitahi kai ai, ka rere ai ki pāmamao. Noho tonu mai ki raro i ngā Makawe Roroa.

Te Arangī, ka nui te mihi.



# ANNOUNCEMENTS - RESIGNATIONS



On the 15th December we will be bidding Te Arangi farewell as she leaves to pursue new horizons. Te Arangi has been with the Trust since 2014. During this time, she built the iwi database programme from scratch, negotiated partnership scholarships adding \$ 285,000 of additional grant money over time, developed policy, grant frameworks, supported a sub committee, developed e-online approval systems, introduced pastoral care as well as a number of wananga, courses , iwi events, provided support to students and whanau during COVID to mention a few .

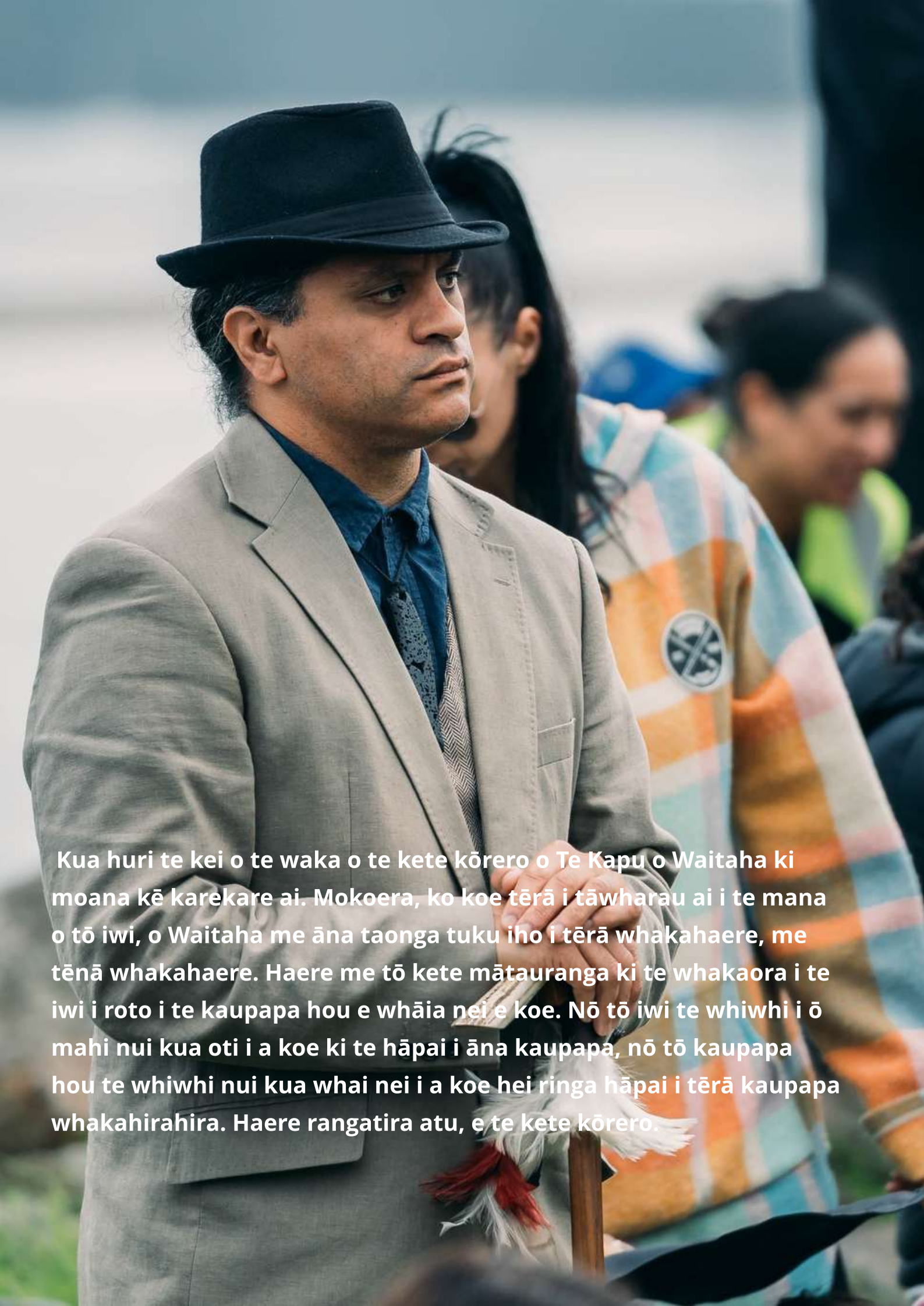
We thank Te Arangi for her contribution, as a testament to the Trust vision,

"ruia he kakano ka tipu, a konei nga hua. Apopo he ngaherehere ana!"

Te Arangi leaves happy knowing a solid foundation exists for the next successive kaimahi to go on and add to that legacy, grow more opportunities, and support for all generations.

Na mihinunui kiia koe Te Arangi!



A man in a grey suit and black hat is looking to the right. He is holding a small object in his hands. In the background, a woman is wearing a colorful striped shirt. The scene is outdoors with a blurred background.

Kua huri te kei o te waka o te kete kōrero o Te Kapu o Waitaha ki moana kē karekare ai. Mokoera, ko koe tērā i tāwharau ai i te mana o tō iwi, o Waitaha me āna taonga tuku iho i tērā whakahaere, me tēnā whakahaere. Haere me tō kete mātauranga ki te whakaora i te iwi i roto i te kaupapa hou e whāia nei e koe. Nō tō iwi te whiwhi i ō mahi nui kua oti i a koe ki te hāpai i āna kaupapa, nō tō kaupapa hou te whiwhi nui kua whai nei i a koe hei ringa hāpai i tērā kaupapa whakahirahira. Haere rangatira atu, e te kete kōrero.

## ANNOUNCEMENTS - RESIGNATIONS



We sadly farewell Mokoera at the end of this year. Mokoera has been with the Trust since 2022, and has been pivotal in the many political forums where Waitaha interests have been represented, along with many submissions over the year in particular relating to water, and our environment. Mokoera has also been instrumental in supporting the paepae, running Te Okere and Matariki wananga, leading the Hautapu celebrations this year, and the many blessings that have taken place. More recently he played a huge role in Te UKu O Takakopiri opening. All of these things are significantly important to the iwi, and our collective journey i roto i te ao hurihuri. More and more we are witnessing the rise in visibility, mana, rangatiratanga, mana motuhake for Waitaha. Although Mokoera is beginning a new role next year, he will maintain the seat on Te Uepu for the Papamoa Hills on behalf of Waitaha. We will miss Mokoera hugely knowing we were truly blessed to have such knowledge and skill at our fingertips with many impromptu callings when needed. We have been totally blessed by you! Ka mau te wehi!



# ANNOUNCEMENTS - KAIMAHI HOU & INTERIM CHANGES

We welcomed Noel Rameka-Mahia this year who assumed the Papakainga portfolio. Noel has worked in construction, housing papakainga, and project managed large scale developments. His skills and knowledge are welcomed as we start to navigate funding, and support for those land blocks who have committed to developing housing on their whenua.

We also make the announcement that Noel will temporarily take over the **Grants and Scholarship rounds between January and February** until such time as an appointment can be made.

To contact Noel, please see details below:



[noel@waitaha-iwi.org.nz](mailto:noel@waitaha-iwi.org.nz)



027 474 9797

## IWI REGISTER

With the imminent departure of Te Arangi, the iwi register will be managed by Shantelle, in Admin Support. Register inquiry can be made by emailing:

[shantelle.admin@waitaha-iwi.org.nz](mailto:shantelle.admin@waitaha-iwi.org.nz)



Tērā a Wahanui i tū ki te puke, ka titiro iho ki te tāhuna, ki ngā toa tauā e rangaranga ana. Ka whakataukitia e ia:

*Ko ngā pāpaka o Rangatauā, he paruparu te kai, he taniwha te tangata.*

Tēnei rā te au o mihi ka rere, ka tau ki runga i te uri a Tutauaroa, uri a Kumaramaoa, me ngā kāwai rau o te pāpaka o Te Pā o Te Ariki.

E māwhitiwhiti ana te rere a Noel Mahia ki Te Awarua kia uru mai ai ki te whare o Te Kapu o Waitaha, ki waenganui i ngā maunga o Otawa, o Rangiuuru.

E te iwi, kua tohua a Noel hei piki tūranga ki te wāhanga ki te papa kāinga.

E Noel, haria mai tō kete pūkenga, tō rourou wheako hei putanga ihu mā tēnei iwi ōu a Waitaha. Nau mai rā, haere mai rā.

## TERTIARY GRANTS



Hakaraia Tertiary Grants are open and close 20th January 2024. We are already seeing a steady influx of applications. Remember there is limited allocation, we encourage that whanau get their application in and not leave this to the very last minute. Reminder you can make application via the website, and or through the Trust APP. Successful recipients will be required to attend a Hakaraia wananga this year. This is primarily to understand how and where the grant originates, whakawhanaunga, and Waitahatanga.



## SCHOOL GRANTS

School grants are open to applications for tamariki attending Primary, Intermediate, and High School. This grant contributes toward helping whanau with fees, stationary costs, school uniforms where other assistance may not apply or be available to help with these costs.

To date we have already received a number applications. Again to avoid disappointment please get your application in on time. Closing date is 20, January 2024.



**If you need assistance for any grant or scholarship application please email [noel@waitaha-iwi.org.nz](mailto:noel@waitaha-iwi.org.nz)**

## BI-LINGUAL HOLIDAY PROGRAMME - A HUGE SUCCESS!

We are pleased to have contributed toward the Bi-lingual School Holiday programme run recently at Haraki. We understand from feedback that this was a great success, with a mixture of fun, learning, and whanaungatanga. We thank Merekeeti, Craig, Ngarohaere, Raewyn, and all those involved, who took time out to provide amazing activities for Waitaha tamariki.



## HAAPORI - RECENT GRANTS MADE



Grant contribution toward Xmas at the Pa



The Trust also granted \$1,500 toward the 40 Year Kohanga Reo Hokorua celebrations



The residual sponsorship funding received from the Western Bay of Plenty District council in relation to community input to the spatial planning for Te Puke, has been released to the Manoeka Mini Breakaway Committee to host the programme for rangatahi input to what they would like see in their community



## SIMPSON ROAD TENDER



### 84 Simpson Road Tender Submissions closing 12 January 2024, 3.00pm

We are pleased to finally announce that the Tender for the house and garage located at 84 Simpson Road is now open for submissions. Submissions close January 12, 2024 at 3.00pm. The removal of both dwellings is strictly by 24 February 2024, no later than 3.00pm. All tender information and submission forms can be requested directly from Noel by email: [noel@waitaha-iwi.org.nz](mailto:noel@waitaha-iwi.org.nz), or calling him direct on 027 474 9797. This is a closed tender to only those whanau who are registered on the Trust iwi database.

## FEASIBILITY - PAKAINGA HOUSING



Almost all those land blocks that put in an expression of interest for the feasibility grant were assessed and met the criteria of the Western Bay Of Plenty council Papakainga/Housing project.

Noel and Rondell have established meetings with the land trusts to explain the feasibility process, and proposed site visits.

It is important to note that the opportunity now exists for land Trusts to commence their own discussions of what papakainga housing may look like for them. This will then be translated into the feasibility. The completed feasibility will leverage future funding needed to progress to the next stage of infrastructure, and housing.

## LENIHAN DRIVE - CONCEPT

A site visit has been completed with the intent of developing a housing concept plan for Lenihan, and Board consideration. This is supported through the Western Bay of Plenty District Council. While no concrete decisions have evolved, it is at least one step further to seeing what the options are for this land.



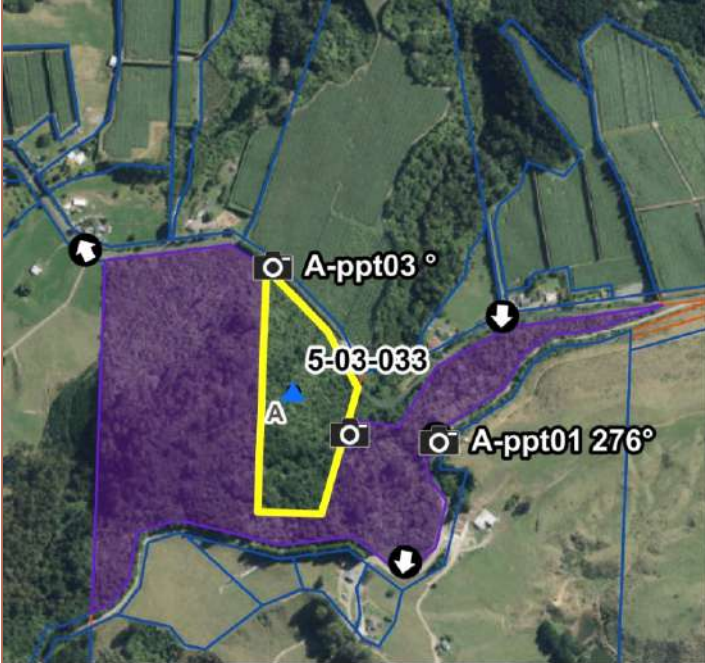
# TE IHU O TE ARAWA WAKA - LAND UTILISATION OPPORTUNITY

Following a recent meeting with Te Ihu o Te Arawa Waka (Western Bay of Plenty District Council and iwi), an announcement was made that the council is looking for land to establish a rural waste transfer station. This does not include waste to ground, rather in bins which are collected and removed regularly. Opportunity exists for anyone who might have some land to lease, that would be suitable for a waste transfer station. For more information please contact Noel by email [noel@waitaha-iwi.org.nz](mailto:noel@waitaha-iwi.org.nz)





## MAUNGARUAHINE - TITLE TRANSFER



We previously reported that QEII will be surrendering a parcel of land under their stewardship to the Trust in Maungaruahine. The background to this is that the land was previously in private ownership, and acquired by QEII with covenants put over the land to protect it from deforestation of native trees. We have commenced title transfer with solicitors. A formal handover is proposed for the New Year. This will be an important milestone for Waitaha given the whenua is a Waitaha heritage pa site.

## WHITIKIORE - WEED ERADICATION PROGRAMME



Thanks to the enormous amount of mahi carried out by Ngarohaere and Te Waiari, there is a huge improvement in the health of the land with weed eradication consisting of blackberry, and non native species trees. A contractor will undertake eradication of the larger blackberry, and wolly nightshade. Also thanks to Bailey farms for mowing the grass as we approach fire alert season.

The project is funded by Jobs for Nature, with a site visit last month, and report completions for Wellington Office. This project will be extended out for a further month. Following we will re-assess the previous landscape plan, and funding required to restore the wetland, protect the pa, replant, and create walkways that will include Waitaha narrative for Te Houhou.

# OUR KAITIAKI HAVE COMPLETED TE AKA PUTAIAO!

## Te Aka Pūtaiao (Kaupae 5)

---

Scientific mātauranga Māori  
environmental studies



## NEW HEIGHTS - BACHELOR OF ENVIRONMENTAL STUDIES

## Te Aho Pūtaiao

---

Environmental Studies - Our Taiao



Watana, Rob, and Luke having successfully completed Te Aka Putaiao, are taking it to a whole new level by signing up to the Bachelor of Environmental Studies commencing 2024 semester. The degree combines scientific knowledge with mātauranga Māori and mātauranga taiao providing a holistic understanding of environmental systems, the impacts on our communities, and an endeavour for solutions. Their commitment to Waitaha Taiao, and the future of kaitiakitanga is "seriously" highly commended!. Fees for 2024, year will be funded jointly by Kaimai Mamaku Trust and Waitaha Charitable Trust.

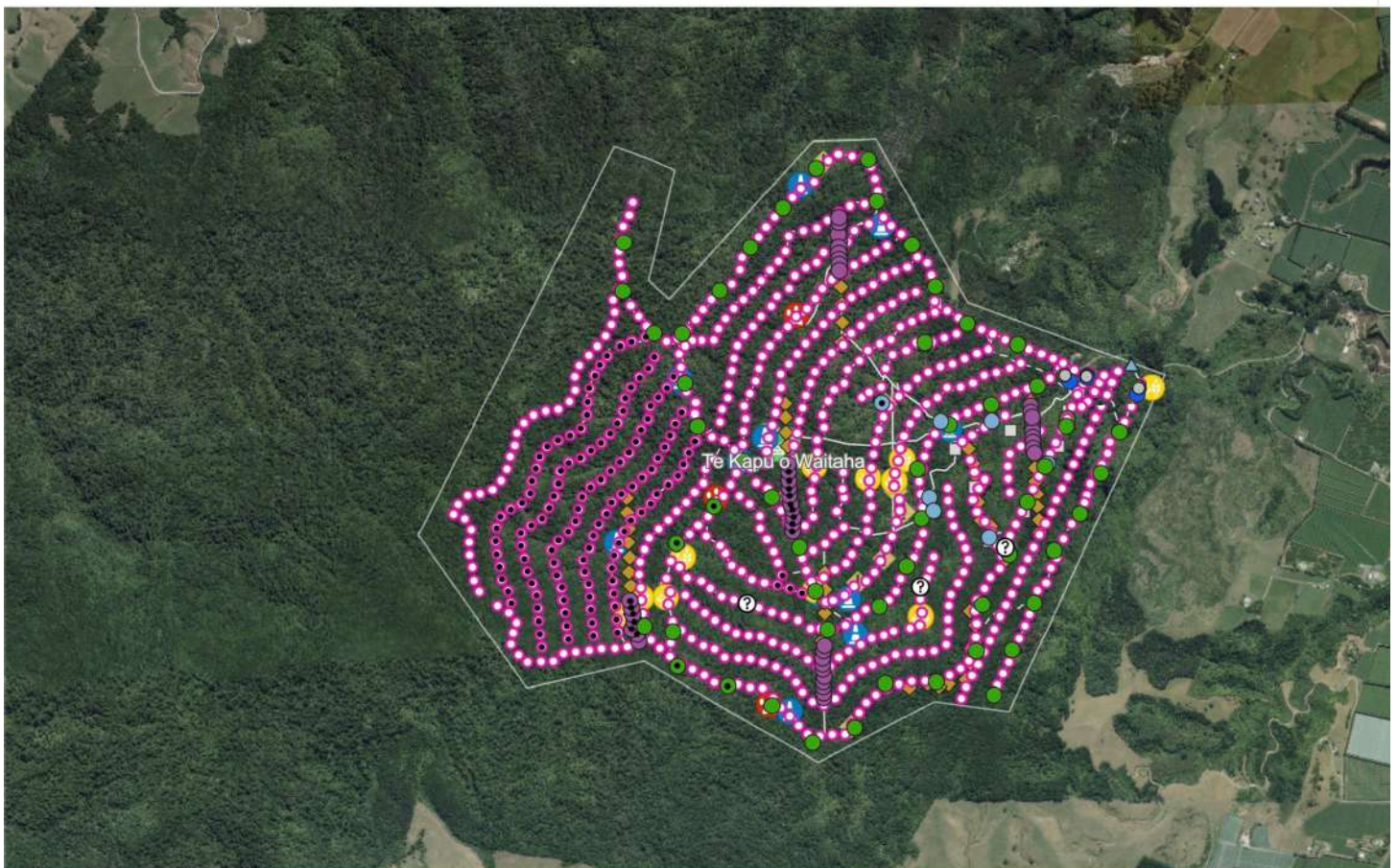


## 400 HECTARES BY YEAR END - AHEAD OF TARGET BY 3 MONTHS

Incredibly, in addition to study, conferences, wananga, and taking tamariki into the ngahere for a burst of conservation education, Luke, Watana, and Rob have come out on top being ahead of their pest eradication plan, by three months. By mid December they would have laid traps over 400ha in Otawa. This is an astounding result given the terrain is steep, overgrown, and they have at the same time had to cut tracks, with a load of tools and traps on their backs! Finding kaimahi who are driven by a unique passion to be in their own waahi, no matter the challenges thrown at them is in this day and age a rare and valued team of individuals., who genuinely throw their heart and soul into saving our ngahere on a daily basis. We applaud them, and consider this team to be the epitomy of role models for Waitaha rangatahi to aspire to now and in the future.

☰ MKMT Aug2023 FIELD MAPS

[Open in Map Viewer Classic](#)





## BEHIND THE SCENES



A major set back this month has been the discovery of failing traps. With some robust negotiation by Rob and Rangituaia, the supplier agreed to replace 100% of the traps supplied with additional on the ground support to physically go out and replace them. This is isolated to a specific type of trap, so thankfully not all the traps. Subject to weather is planned for December 17. If whanau would like to help, please contact Rangituaia, more help on the ground would be appreciated at this time of the year!

## MORE ERADICATED = MORE BIRD SONG



Since pest eradication started in Ottawa, trampers and hunters have been reporting more bird life sounds in comparison to previous years. A good indicator on the positive impact of pest control by the team.



One factor that we pride ourselves on is that NO POISONS are used to eradicate opossums. Instead consumables like peanut butter, and mayo are used as lure (bait).



# HE MAUNGARONGO KI TE WHENUA, ME NGA TANGATA KATOA!

Rangituaia for those that may not know, is the project manager with oversight to the Taiao kaitiaki programmes. She works diligently behind the scenes to ensure their safety, well-being, and all regulatory compliance is met. In addition she manages the funding, budgets, that enables us to continue the mahi. All those conferences, school visits, and training, are organized by her, and not often seen by the iwi as her mahi is operational.



Rangituaia, also has a Bachelors degree in Environmental Studies, and teaches rongoa at Te Whare wananga o Aotearoa part-time, night classes. These are the added benefits of the skill that exists within the Trust.

More recently, she organized time out for all kaimahi/staff and their whanau with three days in Te Urewera.

Without WIFI, this meant, no emails, no phone calls, no txt, only time to truly indulge in whananungatanga, to reflect, to contemplate, and appreciate our Maori world, our relationships, and the blessings we have in each other, whanau, and the mahi we do. If ever there was a prescriptive for the Trust values "ka tika a muri, ka tika a mua", her dedication to others is most definitely it. Ka mihi kia koe Rangituaia!

## NEW SIGNAGE FOR OTAWA

**TE KAPU Ō WAITAHA**  
He Ao Hika

# OTAWA MORIMORI

CARING FOR OUR ENVIRONMENT

Otawa Maunga is the principle maunga [mountain] of Waitaha iwi. The administration for this conservation area was transferred from the Department of Conservation to Te Kapu Ō Waitaha as a result of the Waitaha Treaty Settlement Claim 2013.

Te Kapu Ō Waitaha can be contacted on (07) 573 5314, week days between 9.00am and 4.00pm.

Waitaha kaitiaki contributions and traditional knowledge are essential to the sustainability of our environmental heritage.

The general public can help ...

- ▲ Duty of care: please do not carry out any activity that causes or is likely to cause environmental harm.
- ▲ Please inform Te Kapu Ō Waitaha as the administering authority when an incident has occurred that may have caused or threatens serious or material environmental harm.

### HE KARAKIA

He tai paki one  
He aka rearea  
He ahikaarua  
He hau maiangi  
He ao tu  
He ao marama e!

### SAFE JOURNEY

### MARUTAU STAY SAFE

**PEOPLE ARE WORKING HERE TO RESTORE THE FOREST**

Please keep yourself and the Te Kapu Ō Waitaha team safe by staying on the tracks and away from traps. Hunters, be aware that the team could be in the forest at any time.

Public walking tracks are marked with orange triangles, all other colours are trap lines.

PROUDLY SUPPORTED BY

Department of Conservation  
Te Papa Ahurekaha

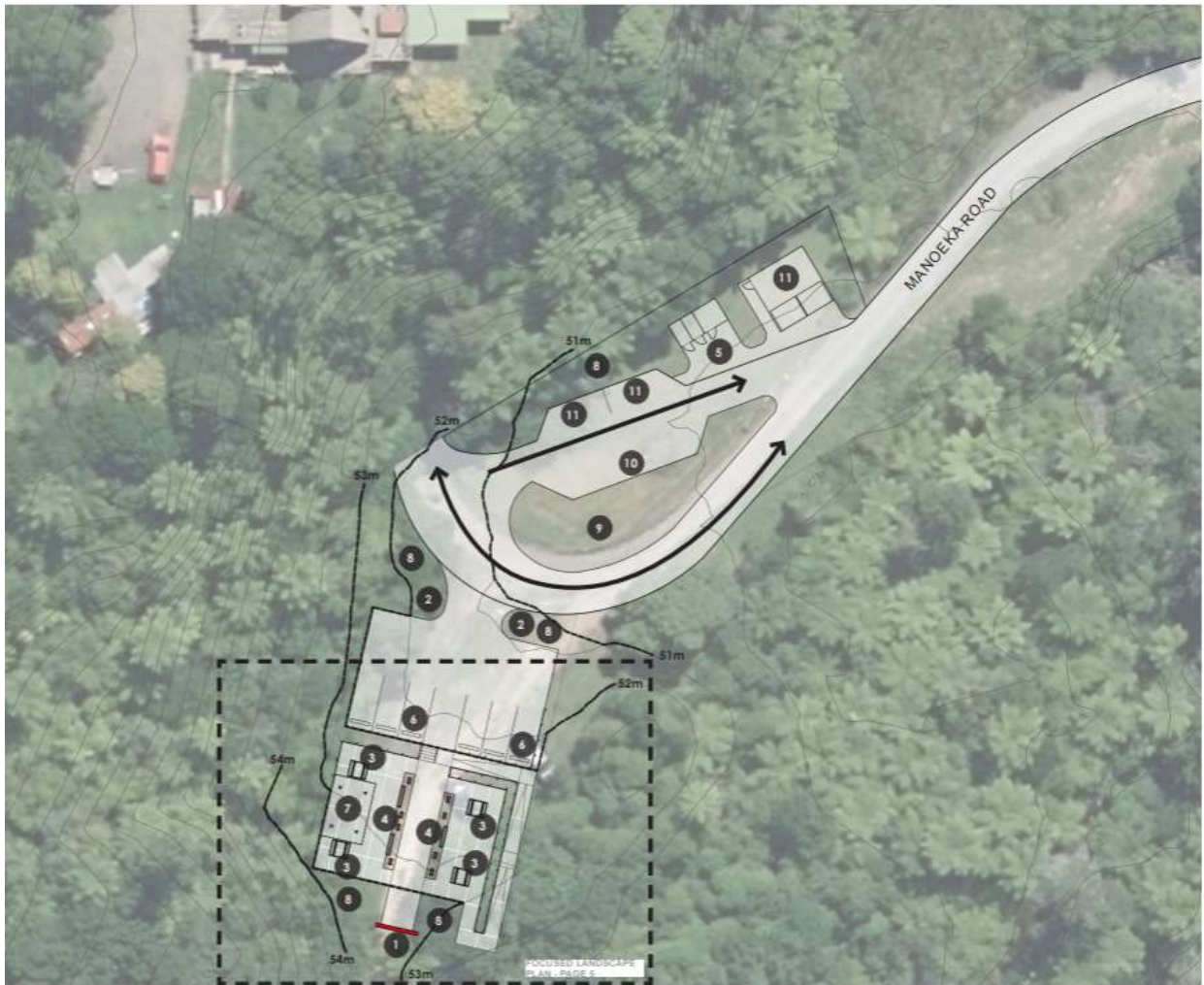
JOBS | MAHI  
TEI WHARE WANANGA  
1001 TE WHARE WANANGA

FIND OUT MORE

Thanks to Kaimai Mamku Trust, DOC and other funders, we had input to the design of a new sign for Ottawa. This will be established at the beginning of the track, we hope this month.



# PRIDE OF PLACE - OTAWA CAR PARK UPGRADE PROPOSAL



We commissioned a landscape plan with Boffa Miskell to pen ideas for the upgrade of Ottawa carpark.

This included improved and defined car park spaces, BBQ area, eco toilet, a designated area for pou to be undertaken in conjunction with the Te Puke Schools, and Waitaha Kohanga, a waharoa defining the entry to Oatwa, turning bay, and native plant landscaping.

Our intent is to create something whanau can enjoy, be proud of and continue to share Waitaha narrative with schools, and visitors to the district.

The next step is to put a proposal forward to stakeholders to improve access, and fund a transformed car park and recreation space.

## FOCUSED LANDSCAPE PLAN

### KEY

- 1 WAHAROA + WAKA KERERU + ROCK  
NO VEHICLE ACCESS
- 2 PICNIC TABLES  
POU KŌRERO LOCATED WITHIN GARDEN AREAS
- 3 NGA POU KŌRERO  
POU KŌRERO LOCATED WITHIN GARDEN AREAS
- 4 CARPARKS  
8 X PUBLIC PARKS
- 5 BBQ AREA  
ELECTRIC BBQ + BENCH SEATS
- 6 TAONGA PLANT SPECIES  
ENDEMIC PLANT SPECIES TO WAITAHA



# RIVER EROSION

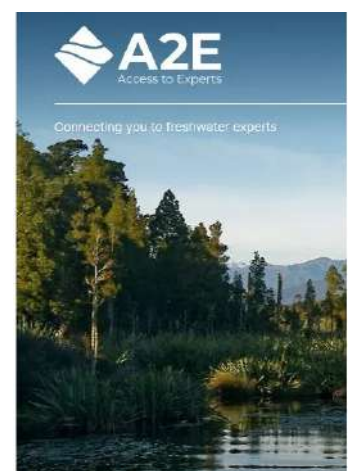
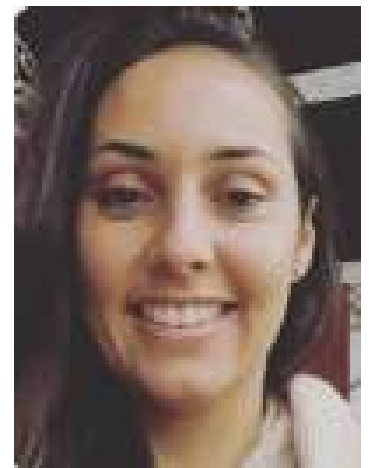
A site visit and meeting with BOPRC, WBOPDC, Mokoera, Ngarohaere, and Wihau Grant seeking short and long term options for remedial work to the river erosion bordering the marae resulted in a commitment by council to provide concrete bollards in order to manage pedestrian and vehicle danger along the edge of the river bank. In addition they felt that slopping the bank would strengthen against further erosion. It is acknowledged that longer term solutions would require engineers to come up with a plan on how to manage further flood damage from occurring, and therefore compromising the marae car park area.

This has been followed up by Mokoera.



# IWI FRESH WATER MANAGEMENT PLAN

We have expanded our efforts to protect our waterways by taking up an offer of assistance for a specialized water expert, Lara Taylor. Lara will help us to build our capability by facilitating a fresh water strategy and action plan for implementation for Waitaha by Waitaha. Lara is an experienced scientist and researcher. She has a keen focus on traditional world views that acknowledge the connections between indigenous people and ecosystems. Ngarohaere has completed some baseline data for Te Raparapaahoe, and will continue to test water quality and take EDNA samples which we will send to Wellington for analysis. EDNA will tell us what species currently exist in the awa. In that way we can determine what species NO longer exist and what actions we need to take. Evidence will help leverage any changes required to keep ensure water security exists now and in the future. This project will be a pilot which may be duplicated across all the major waterways in the Treaty Settlement.



# TE UKU O TAKAKOPIRI OPENING

We had the pleasure of leading the organization in respect of the blessing for the opening of Te Uku O Takakopiri car park and new track opening. Following the powhiri at Hei, we celebrated with a memorable parakuihi thanks to Lyn, Carliza and their team of caterers. We acknowledge and thank the Maori Wardens, Craig, our koeke, pae tapu, Mokoera, Josh, Te Kanapu, Luke, Watana, Robbie, Padre Paruhe O'Callaghan, Pouroto Ngaropo, Aroha Ririnui, Te Hau Kainga, Te Uepu, Te Puuwhaariki and respective iwi leadership, (Ngati He, Ngati Pukenga, Nga Potiki) for their support in a successful and memorable day. A special tribute to Whareoteriri who was deeply committed to this project.





# TE PUUTAKE O TE RIRI COMMEMORATIONS [OCTOBER 2023]

Te Puutake o Te Riri commemorations was attended with representation from Waitaha whanau, including Matewai from the Board and staff members. It was significantly important to represent Waitaha given Hakaraia's leadership at the time of the Gate Pa and Te Ranga battles. That representation came from the whaikorero given by Mokoera, and later Padre O'Callaghan received a puu gifted to Waitaha as part of the ceremonial proceedings.

It was great to see Craig and Rutu attend, despite the hectic mayhem of typical Tauranga traffic.





## INVESTMENT RETURNS

Investment	Carrying Value \$m	FY24 Operating Return <sup>1</sup>	Performance <sup>2</sup>
Hāpai Commercial Property	\$4.1m	4.7%	✓
Hāpai Housing	\$1.5m	3.7%	✓
Pūai Tangaroa	\$0.5m	1.6%	✗
<b>Total Collectives</b>	<b>\$6.1m</b>		
Simpson Road <sup>3</sup>	\$11.2m	0.2%	✓
Te Kopuroa – Kiwifruit Orchard	\$10.8m	18%	✓
Lenihan Drive	\$2.2m	1.1%	✓
Dunlop Road	\$1.8m	4.3%	✓
<b>Total Other Investment</b>	<b>\$25.9m</b>		
<b>TOTAL</b>	<b>\$32.0m</b>		

<sup>1</sup>annualised or forecast return for the respective asset or Collective LP  
<sup>2</sup>YTD operating performance vs budget (revals not budgeted)

<sup>3</sup>Asset held by Trust

28

## KEY PRIORITIES



Getting approval from TCC in respect of Karaka Pines consent continues. Lack of response by Nga Potiki stifling progress. Heritage New Zealand has provided an approval authority.



Monitor managed funds due to unfavorable market conditions. Review has been completed.



Complete impact investment modeling. This has a strengthened focus on social outcomes alongside a commercial outcome. Modeling to be considered by the Board.



# IMPORTANT NOTICES & REMINDERS



## **ELECTION TO FILL ONE TRUSTEE POSITION**

The roll and nominations are open, closing 21 December 2023, no later than 4.00pm. This vacancy has arisen with the early resignation by Joshua Te Kani due to additional and important whanau commitments. The Trust thanks Joshua for his application and supports his decision.



## **TRUST AGM**

The Trust AGM has been notified to be held Saturday 24th Feb 2024, Hei marae commencing 9.30am.



## **TENDER - SIMPSON ROAD PAPAMOA DWELLING AND GARAGE**

Reminder that tender submissions close 12 January 3.00pm. To request information and submission form contact [noel@waitaha-iwi.org.nz](mailto:noel@waitaha-iwi.org.nz)



## **SCHOLARSHIPS & GRANTS**

Grants and scholarships close 20 January 2024. All inquires to be directed to [noel@waitaha-iwi.org.nz](mailto:noel@waitaha-iwi.org.nz)



## **TRUSTEE MOVEMENTS**

The Board has recently co-opted Mereana Te Pere, earlier than the AGM in February. This has been made possible due to Matewai resigning early. Matewai had filled a casual position of one year. The Trust sincerely thanks her for her valued contribution during the period she was on the Board.



## **OFFICE CLOSURE**

The Office will be closed to public on Thursday 21st December 2023, 4.30pm and re-opening January 15, 2024.



Meri Kirihimete

FROM ALL OF US AT THE TARI WE WISH YOU ALL A SAFE AND HAPPY XMAS