



JULY KEY DATES

SATURDAY JULY 8TH

MATARIKI / TE UMU KOHUKOHU WHETU WANANGA

Hei Marae, Saturday, 8 July 2023 10:00am – 1:00pm
Contact; mokoeara@waitaha-iwi.org.nz

SUNDAY JULY 9TH

MATARIKI - TE UKU O TAKAKOPIRI (PAPAMOA REGIONAL HERITIAGE PARK)

Te umu kohukohu / hautapu, Sunday, 9 July 2023 6:00am
Bus pick up from Hei marae 5.45am for Waitaha whanau
Contact; tearangi@waitaha-iwi.org.nz

TUESDAY JULY 18TH

WAITAHA HUI-A-IWI / BI-MONTHLY HUI

Hei Marae. Tuesday 18 th July 6.00pm
Iwi rep appointment will be included on the Agenda
Contact; vivienne@waitaha-iwi.org.nz

MONDAY JULY 24TH

TE KAPU O WAITAHA TRUSTEE BOARD HUI

Te Kapu O Waitaha, 2 Dunlop, Road Te Puke
Monday July 24, 4.00pm – 7.30pm
Contact; shantelle@waitaha-iwi.org.nz

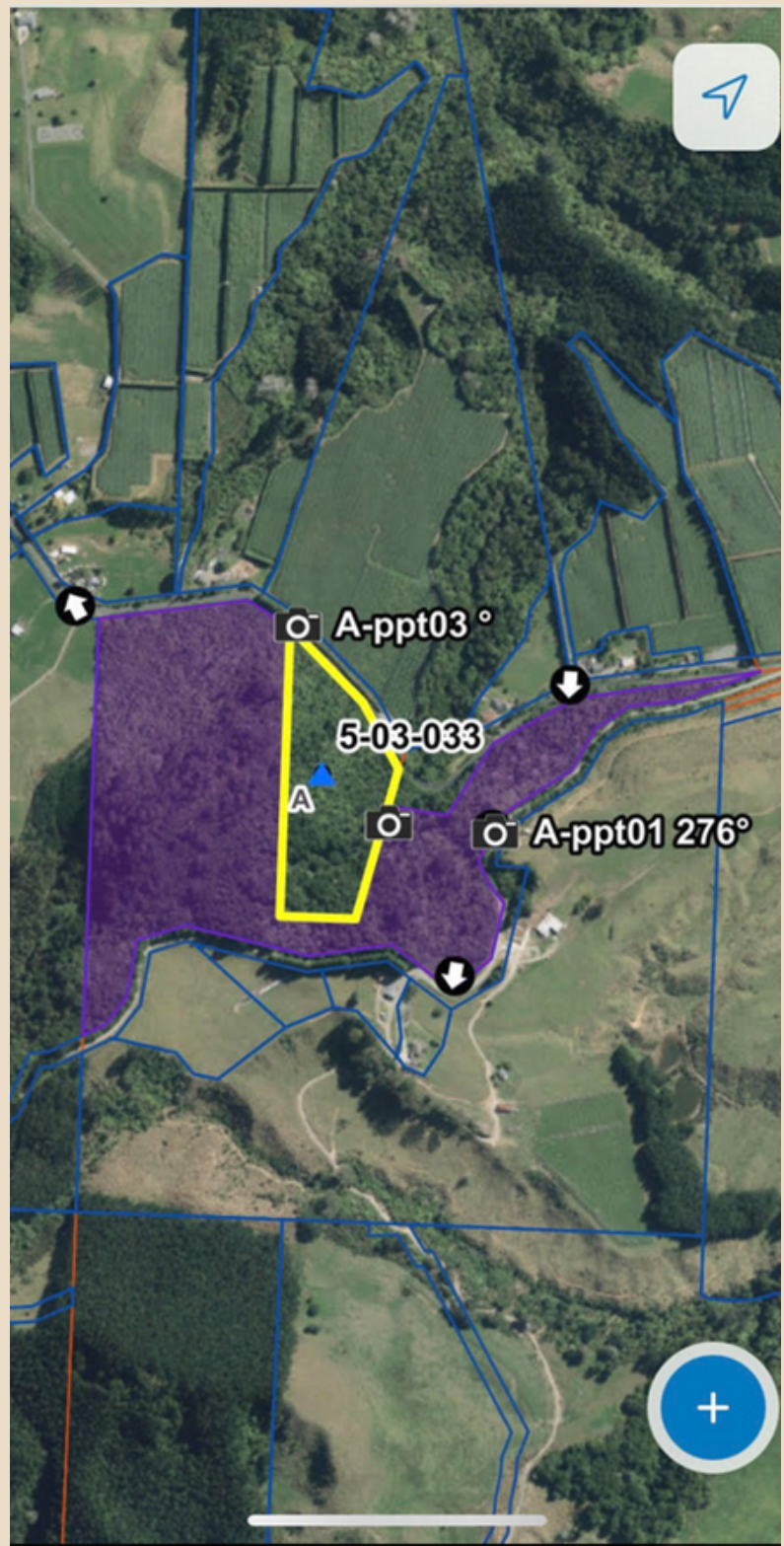
QE11 HANDBACK PORTION OF MAUNGARUAHINE TO TE KAPU O WAITAHA

Prior to Treaty Settlement, Maungaruahine was formally in private ownership, and later administered by Dept. Conservation, under the Conservation Act. At that time Government had introduced laws that enabled the protection of native forests on privately owned land. Areas were then covenanted under the stewardship of the QEII Board. A portion of Maungaruahine remains under QEII, until recently where the QEII Board has now approved that the covenanted area be gifted back to Waitaha for \$1.00. This is another significant milestone for Waitaha.

The map area highlighted in "yellow" was under QEII, with the purple representing the entire Maungaruahine conservation area. With the handback now approved, that yellow portion will be awarded Title transferring to Te Kapu O Waitaha as the new legal owners.

We will be guided by our Pae Tapu, as to the formal handover and tikanga process.

Keep informed on this occasion by tuning into the Trust facebook page, or accessing information on the Trust mobile APP.



TE KOPUROA KIWIFRUIT ORCHARD

The harvest is well and truly over with better results than anticipated, despite the weather conditions!.The orchard achieved above industry standard this year, in both Gold and Hayward Green crop. We are pleased to also report that the orchard achieved Kiwi Start for 2 maturity areas in the Green and 1 in the Gold.

Winter pruning has now started in the orchard, with replacement of AG beams in some areas, shelter belt maintenance, and removal of dead trees.

Recently we have upgraded new irrigation which is working well. We also replaced the failing water meter, now upgraded and has met Council compliance.

We take the time to acknowledge the dedication of Prospa orchard manager Manpreet Singh who stayed past midnight to monitor Kopuroa vines during the hail storm which affected so many other orchards this year. Te Kopuroa was not affected. We also thank Kokiri Rota Supervisor for the harvest team, from Bay Kiwifruit Contractors.



KARAKA PINES RETIREMENT VILLAGE GROUND LEASE UPDATE

While it may seem we are a stuck record on this kaupapa, we can report we are etching closer!

There has been a significant amount of mahi done by Karaka Pines, and the Trust in preparing for consent approval. Currently the ground lease is being drafted by solicitors for approval by the Board, and Karaka Pines. A successful consent

approved by Council will trigger the commencement of the ground lease.

We had previously invited Waitaha contractors to contact our office adding to the list of Waitaha operators for future opportunities in respect of the Retirement development and infrastructure.

To register your companies interest, please email

vivienne@waitaha-iwi.org.nz.

84 SIMPSON ROAD PROPERTY

Three years ago, the Group Holdings had purchased a residential property to provide independent access to the Retirement Village. At some stage the house will need to be removed to make way for that entrance. The Directors have indicated that they will run a process enabling first priority for Waitaha to the three bedroom lockwood house. While, details are yet to be confirmed, the only cost is likely to be the removal for anyone interested. The process for this property will be provided in the near future, but something for people and the community to think about in the meantime.



MANGARUAHINE CAR PARK

Final work on the carpark is now completed with a culvert installed recently to manage stormwater land overflow. We appreciate all the mahi Ngarohaere has done to keep this area clean, and free from gorse.



TIAKI- TAIAO

MATARIKI

Matariki has risen, so too have all the kaupapa relating to her. Matariki is directly related to the taiao in many ways. As such there are many kaupapa in the rohe including our wānanga on Saturday 8 th July, Umu Kohukohu Whetū on Sunday 9th July up on Pā Takitahi. Registrations for the wānanga have closed but the registration for the ceremony is still open.



TE RAPARAPA-Ā-HOE EROSION

BOPRC and WBOPDC have finally provided a plan to remediate some of the impacts on our awa, with an emphasis on the area near Hei marae.

Works will commence as the machinery becomes available near the end of August.



WAIARI WATER TAKE PROJECT

The cultural recognition framework for Tauranga City Councils Waiari water take project is starting to take shape. Opportunities for some uri of Waitaha, Tapuika, Ngāti Whakaue ki Maketū and Mokopuna o Tia me Hei will present in due course. Although this does not clear our mamae for our awa, our awa will receive reciprocation in manaaki in various ways.

PĀPĀMOA PATHWAY

The shared pathway along Pāpāmoa at te ākau (the beach) is in construction, Papa Wharekonehu is providing his cultural monitoring services. Waitaha is also engaging one of our local artists to provide cultural representation along this pathway, more to come on this. Waitaha have also provided cultural narrative for this project to ensure our ahi is still burning in more of our Takapū outside of Motungārara.



TE TUMU KAITUNA 14

Te Tumu Kaituna 14 Block trustees have agreed to re-engage with Tauranga City Council on future development. Thus, TCC has also met with some iwi to seek feedback. Waitaha has been present and provided feedback and concerns for this development. More discussions to be had.

DOG EXERCISE PARK

The works have started to create a dog exercise park at Lawrence-Oliver Park between Te Aorere Pa and Te Pohue. This will be coupled with a wetland area which will begin before te waru (summer).



AFFORDABLE WATERS REFORM

The Affordable Waters reform (previously Three Waters) is a long way off to becoming a reality, but shifts have been made which ultimately provide better iwi representation. The Bay of Plenty region is now a part of Entity C (previously Entity B). Fewer regions/councils/iwi therefore stronger voice for all.

OTAWA

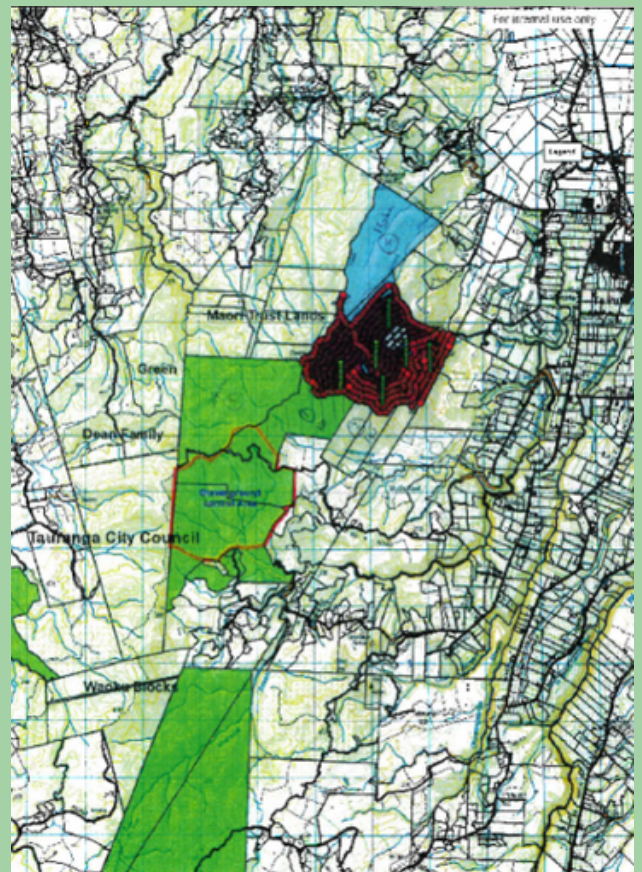
The team has continued to expand the trap line ha in Ottawa, with the aim of achieving coverage for 400ha over time. They report that some areas are extremely challenging terrain, regardless they have continued with their pest management plan.

We also thank Louise Saunders and her team from Kaimai Mamaku Trust who were successful in achieving more funding for the conservation mahi. This has enabled an extension of the current kaitiaki mahi for Ottawa out to 25/26. The red area on the map is the current Project area for pest management control.

KIWI RELEASE

The Taiao team visited Warren Heip Kiwi creche this month, and were part of kiwi release into Otanewainuku.

These relationships and learning is important for the potential of Ottawa and Maungaruahine whenua, introducing kiwi back into those areas.



NEW PROJECTS AND CHANGES

Ngarohaere has continued to manage the trap lines in Maungaruahine, with added observations on the health of the ngahere which he diligently documents on a daily basis. Watana will take over this operation in addition to Ottawa, while Ngarohaere and Edward October will take up a new project on Whitkikiore Papamoa conservation land, to eradicate weeds, and removal of all dead wood. This will be in preparation of the long term goal of restoring the whenua with native trees, improving ecology, and establish cultural history narrative on the whenua.



PATAKA KAI

This project has started with interviews completed identifying the extent to which species are no longer in abundant, or not present in areas as they were in the past. This will formulate the baseline for surveillance on the awa for the next 6 months.

The mahi will be undertaken by Ngarohaere, which requires monitoring by the moon phases and documenting his observations. The outcome of this would then be an analysis on how to improve and restore species to the awa. Wananga with other monitors are planned for next month.

FIREWOOD

If any whānau want firewood, please contact Ngarohaere to arrange pick up. The wood is located in Papamoa on Whitkikiore block.



TRAINING

Training is ongoing for the Taiao team. We congratulate them on their recent certification in the operations of chainsaws. This will mean they can clear tracks, and for Whitkikiore project get rid of the dead wood.



ENVIRONMENTAL CONSERVATION - EDUCATION

The team has recently made time to share pest management/kaitiakitanga with Te Puke Schools. They are keen to develop a programme to continue this awareness, and encourage rangatahi to consider kaitiakitanga as future job opportunities – not only in pest management, but also matauranga, scientific research, environmental management, the list is vast.

In addition to this, we have also been working with Tatai Takuira to coordinate environmental signage for Otawa Car Park area. We will also speak with Waitaha Kohanaga Reo with an invitation to participate as well.

With regards to the car park, we will be approaching the council seeking to upgrade the car park, which is in a deteriorating state, in need of repairs.



WAITAHA CONSERVATION LANDS

We are working on a planned calendar for the year which will establish meetings between all trusts who are currently working on conservation lands to which Waitaha administers, or has an interest from Treaty Settlement. In this way, we can better understand everyone's pest management control operations, maximise expertise, knowledge, and resourcing across all our conservation areas. This will include, Whakakaha Trust, Otanewainuku Kiwi Trust, and Waitaha Charitable Trust, including DOC.

WAITAHA HOUSING UPDATE

We can report that meetings are still occurring between land trusts with regards to organising themselves in preparation of requirements not only for their land trusts but also housing goals on their whenua. There is a lot to work through, and this takes time. We have also continued our conversations with Council and funders in the background to position those trusts who are ready to take the next step for feasibility on their land for housing. We anticipate that three are in such a position, therefore there will be a big push over the coming months to achieve in the very least, completed feasibility and concept designs.

The Board has assigned Liz Te Amo, and Areta Gray to the housing portfolio supporting both iwi and operations in this space.

In addition to the housing programme, Jackie has also supported whanau to address issues and concerns toward healthier homes. We hope that funding eventually is available through Te Puni Kokiri for repairs and maintenance of homes. On enquiry, they advised no putea left up to 30 June of this year.

We also report that the Housing Programme and Facilities coordinator position will be advertised in the coming weeks with the recent resignation of Jackie, where we acknowledge her valued contribution for the short time she has been in the role.

EDUCATION

MAKUINI TE AMO – APPOINTED

The Grants Distribution Sub-Committee is excited to announce that the Community Committee member has now been appointed.

We welcome Makuini Te Amo to this position which is for a term of three years.

Kuini brings years of experience and knowledge in the education sector. With serving one year previously on the Te Kapu o Waitaha Board, she is ready to hit the ground running.

MIHARO!

Planning is in full swing for 2023/2024 distributions. We are very excited to share with you some of the available grants for the next financial year very soon..



GOOD NEWS STORY

Bonnie Boyed

Massey University

Bachelor of Communications

Majoring in Communication Management

Hakaraia Education recipient of three years.

Through study, the loss of wānau members, becoming a new mum, living away from home and putting in a lot of hard work, Bonnie can finally graduate with her degree November 2023.

She has also opened her new business in Whangaroa called 'Harbour Windows'.



“I wanted to send a big mihi to you for your awhi throughout my university education. Only one elective paper away from completing my degree and I will be doing that one paper next semester. So excited to learn again and walk away with my tohu this November. Through the funding I was provided by Waitaha, I was able to further my education and now as a mother trying to better my life for my son, I am now able to start my own business and in November both my partner and I will have degrees to support our business growth. After reflecting on my journey and where I am now, I needed to message and send my unconditional Aroha to you for the mahi the committee does for our people. Nothing but respect for everything the Waitaha Trust stands for and as someone who has benefited immensely from your funding, I know you will be able to continue enabling change for many others too. “

We congratulate you Bonnie! Your iwi are very proud of you and all your achievements.

MAURI ORA!