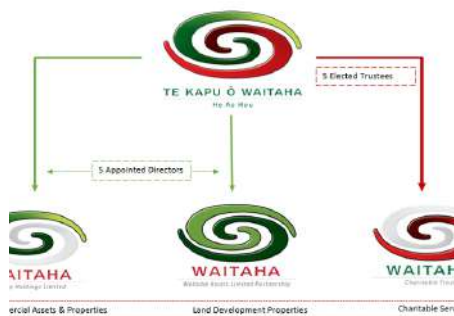


Poututerangi 2023

PANUI



GOVERNANCE

The incoming trustees have now been fully co-opted onto the Board, ahead of the AGM. This will strengthen a position of Governance continuity going forward. The current Trustees are; Retimana Te Moni, Areta Gray, Liz Te Amo, Matewai Karaka-Clarke. Chair, and portfolios will be established at the next Board meeting in March.



ELECTIONS

The current Board recently resolved to hold an election to fill the 1 remaining 3 year Trustee vacancy. The roll is now open for registrations and nominations. See below for more detail, election related forms, and information.

HUI-A-IWI

The Board favours the benefit of the previous Hui-A-Iwi and has offered to organize and host the first one for 2023. Details are Hei Marae, March 21st, 6.00pm. All welcome.



TRUST AGM

Reminder to whanau that the AGM will be held Wednesday 29th March 6.00pm at Hei Marae, followed by hakari. We will announce shortly when the annual reports will be available on the website.

Poututerangi 2023

HOUSING

Housing co-ordinator changes

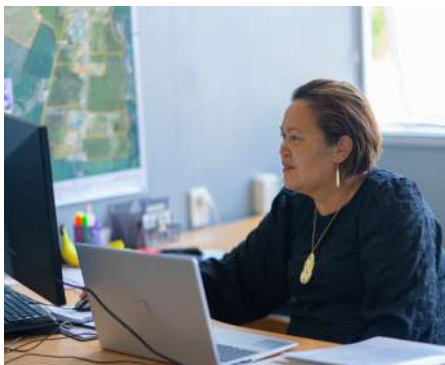


We report that Veroni Leota has resigned from her position as Housing and commercial facilities co-ordinator.

After many years of service to the Trust, Veroni has decided to pursue a long time personal dream. She will undertake a reo degree with the University of Waikato this year. Although her leadership and caring nature will be greatly missed, we must also celebrate and support her reo journey. We sincerely could never express fully the privilege of having her as part of the senior executive team. We wish her all the best and know her leadership, and knowledge will continue to benefit many more, no matter what future environment she steps into.

"he piki kotuku koe"

Housing co-ordinator appointment



We welcome Jackie Clarke into the housing co-ordinator and commercial facilities role. Jackie comes with past experience in tenancies, budget advisory services, rural lending assessment and housing repair programme support services, community revitalization projects, and workshop facilitation. Jackie will continue the work of Veroni, building the necessary team around her to deliver Papakainga homes in support of land owner Trust aspirations.

Poututerangi 2023

HOUSING



Papakainga Housing support

We recently held a hui to update Land owner Trusts/Whanau in respect of papakainga housing assistance. Funding is available for feasibility studies to inform the viability of land suitability for papakainga housing, through the agreement between the Trust and Western Bay Council. In addition a team will be established by Council offering technical expertise in infrastructure, consent compliance knowledge, a papakainga specialist, project manager, and council planners. Furthermore, this group will assist and or find more resources to support Land owner achieve papakainga housing on their land.



Manoeka

We have the opportunity to explore ideas for Manoeka.

We would like to establish a fun day and festivities which will also include space for some united and creative ideas for positive change and improvement that you would like to see for your whanau living at home in Manoeka. As you know this is nothing new, its a continued conversation except we will now seek to draft a proper concept plan, and see what can be achieved over time. The event will be supported/sponsored by Western Bay Of Plenty District Council.

If you would like to help or wish to contribute input to the event please contact Jackie on jaqueline@waitaha-iwi.org.nz, or alternately contact the office on 07 573 5314.



Poututerangi 2023

COMMERCIAL



Commercial companies

For the benefit of those who have newly registered, the Waitaha Group Holdings, and Waitaha Assets are Limited Partnership companies wholly owned by Te Kapu o Waitaha.

The Board consists of three Directors, Brad Tatere, Tom McClurg, and Frank Grant.

Role of the Directors

The role of the Directors is to provide governance for the economic wealth and growth for Waitaha. The role is also commercially complex requiring a great deal of experience, expertise and sound decision making processes.

In many cases, investment has been those that are rare, unlisted, with high value partner equity portfolio that we would not have been otherwise able to invest in on our own. These opportunities have been achieved due to the extensive networks and environments that the Directors constantly circulate in.

Commercial Priorities

The following are priorities for the Board;

1. increase revenue
2. continue to diversify and achieve investment portfolio targets
3. grow direct investment
4. maximize return from Treaty Settlement assets
5. build a reputation of commercial credibility and excellence
6. manage risk



Poututerangi 2023

COMMERCIAL



INCOME ASSETS

Hapai Whanau Commercial Properties

Waitaha has a share in 5 commercial properties in different locations throughout Aotearoa. This portfolio is a direct investment of \$ 3 million. Revaluation of these properties shows our share value has grown to \$3.8 million since inception. At the last QRTR \$93,000 dividend was received, and a net operating profit share of \$ 95,000. This is a partner collective investment with a portfolio value of \$100 million circa.



Leased Properties

A key focus for the Directors is to investigate housing opportunities for Waitaha on the Lenihan Drive property. A key priority will be to offer rental housing for Waitaha whanau as a priority, and to deliver a return from such a development for the iwi. These are preliminary discussions with the intent of further input before making final decisions.



Koura quota

In September 2022, Wakatū issued a notice to Parininihi ki Waitotara (PKW) of its intention to sell their kōura (crayfish) quota – c.34.5mt for c.\$50m . The opportunity to purchase kōura quota parcels of this size is extremely rare and has delivered excellent returns over many years for the sector. If managed well, positive returns will continue over generations to come. The Directors have recently committed \$500,000 capital to this investment partnership.

Poututerangi 2023

COMMERCIAL



HAPAI Development

Hapai Development is a developer company with a number of iwi investors. The Directors have engaged in negotiating a capital investment partnership opportunity for the Retirement Village development at Te Houhou/Simpson Road. This has the potential then to create further opportunities for Waitaha businesses/contractors, training and employment, as well as a share of profit margins. Waitaha business or contractors are encouraged to contact the office to register your interest in this development project.



HAPAI Housing

Waitaha has a capital commitment of \$2 million in Hapai housing. The total equity partner portfolio (with other iwi investors) is \$ 50 million, which will be achieved by capital calls over time. Of this Waitaha investment share is 3.93%.

Te Houhou Ground rental - Karaka Pines retirement village

Karaka Pines is progressing the necessary works required for consent to Tauranga City Council. The process for approval is expected to take as long as June of this year.

Ground lease will return \$660,000 of revenue certainty with CPI increases, and a ratchet clause ensuring no lease decreases despite any negative market impacts.

The ground lease will be over 50 years with the right of renewal for a further 50 years. This tenure period is typical of a retirement village, considering the value of investment, social responsibility, and retirement regulations. Waitaha will buy back the operation at expiry for \$1.00. This opportunity enables land retention, and revenue.



Poututerangi 2023

COMMERCIAL

ERIKSENSGLOBAL
Since 1995

Managed funds

A total of \$ 7 million has been invested with Fund managers Eriksens Global. The investment is proportionate to the investment portfolio, investing in Milford Assets, Harbour fund, and Oceans 5. Each of these has a different investment purpose. One being to grow the investment, increase capital, and to provide a revenue stream. Dividends received in the last 5 months \$ 127,000, and revaluation increase of \$ 84,543.

Te Kopuroa Orchard

A review of the orchard was completed at the end of last year. This was to better inform performance, identify any areas to improve return. Other considerations were industry wide and regional performance, comparatives. This report suggested that the orchard had improved significantly since acquisition. It also highlighted further areas where there was potential to increase yield, and revenue. Impacting factors were unfavourable weather conditions which had affected fruit quality for many growers. Reported also were higher costs, experienced across the industry. These negative factors were not isolated to just Te Kopuroa. The Directors are focusing on what they can control through an implementation plan for improving yield, quality, and revenue performance. At the last quarter budget was tracking well below forecast. A budget review will be likely in the coming month. To date sales revenue generated is \$ 1,007,934 with costs of \$643,023. Note some expense has been capital reinvestment into infrastructure improvements this year. Future opportunity is Zespri releasing more Gold license this year. Gold is known for stronger fruit resilience, and a high value export crop.



Poututerangi 2023

COMMERCIAL

EASTPACK Shares



Growers who pack with Eastpack are shareholders by way of holding ordinary shares. The opening balance of shares held with Eastpack last year was \$109,093, with a dividend of \$ 3,394. A further allocation of 15,256 shares was purchased this month at \$21,706. Total shares held is \$ 130, 779 as at 1 March 2023.

Capital calls for shares contributes to investment into packhouse high tech. automation, increasing time efficiency of fruit to export market, storage management, reducing pack house labour with the intent also to increasing labour supply to orchards. These measures were primarily driven in the wake of COVID impacts.

Other revenue

Further revenue of \$ 23, 228 has been generated through the harvest and sale of male kiwifruit flowers.

Annual rent revenue of \$ 4,000 is also generated from a shed located at the orchard.

Property rental of \$16, 830 has been received to date from the residential house located at Simpson Road, Papamoa. This will eventually cease at the removal of the home making way for the entrance to the Karaka Pines retirement development. The house will be sold as a relocatable dwelling.



Poututerangi 2023

ENVIRONMENTAL



Bio-Heritage projects

Our contract with Te Whakahononga is based on Otawa. This project concerns itself with the inheritance and preservation of the balanced functionality of Taane, with special care through monitoring of natural habitat, and taonga within those ecosystems. Monitoring is based on our Maori luna systems, seasons, and certain tohu. The opportunity enables us to build our own understanding of the health status of all life on Otawa. This project aligns with extending our maatauranga knowledge, growing technical expertise, data analysis of our ngahere, and the implementation of whakairinga korero. Luke Whare and Rob Peake are leading this project with the operational support of Rangituaia.



Pataka Kai - river monitoring

Following the overview presentation by Whakarongotai O'Callaghan last year, we had called for expressions of interest in respect of a project monitor. That has now been filled with Ngarohaere, who will be accompanied by 1 rangatahi. The monitoring and surveillance will be undertaken on Te Raparapaahoe. Included will be some baseline data identifying species that existed in the past, habitats, previous hydro flow and so on. Our aim is that by August of this year, we can analyse likely impacts, and what measures can be done to restore the river, and life that once existed there. Given the awa is a tributary into the Kaituna, this is directly linked to encouraging action to restore taonga species and habitat in the Kaituna.



Poututerangi 2023

ENVIRONMENTAL



Maungaruahine

Kaitiakitanga continues on Maungaruahine with reports of declining numbers of paehamu catch, while rats remain the constant threat. More recently the parking area at the base of the maunga has been cleared with new metal, and removal of gorse in the process. We have engaged archaeologist Ken Philips to map the extent of the pa site. He has managed to complete a brief site visit, cut short by wet weather. Ken has indicated that the pa is extensive, and he believes it stretches beyond the boundaries of the conservation area. His initial walkover identified, fortification trenches, and extensive terracing, on the site. Much of his korero supports the history pertaining to a large network of connecting pa in and around that location. We will share his report on completion of his assessment, and GIS mapping of the pa.



Signage

We have had brief brainstorming sessions in respect of signage and landscape design for Maungaruahine and Ottawa entry points. We will seek input from the iwi, and koeke with regard to the narrative for those signs. We will also follow up with input from tamariki and students.



It would be useful to engage Waitaha artists in this exercise. We seek graphics, which we can add to the signage concept that promotes Waitaha relationship to Ottawa and Maungaruahine, Kaitiakitanga, and regard for Waitaha tikanga associated with these areas.

Poututerangi 2023

ENVIRONMENTAL



Otawa

Te tira Taiao well ahead of their pest control and trapping work plans. To date, 200 hectares of Ottawa ngahere has been surveyed, traplines set- A24s, AT220s, leg holds and monitoring tunnels completed. This brings us half way through our overall project plan of 400 hectares. There has been a fair amount of weather disruption over summer with flooding in the Kirikiri, slips along the banks and numerous tree fall. Health and Safety is paramount. Please pay attention to any access signage - currently closed.



Protocols

We are currently working on a protocol document which will guide engagement with Te Kapu O Waitaha by other Trusts, researchers, and alike in respect of Ottawa.

This is important given our Treaty Settlement, we must not lose sight of our responsibilities as Kaitiaki and mana whenua to Ottawa. Disregard for Waitaha tikanga will not be tolerated.



Volunteers

If whanau have an interest in these projects, and would like to help by volunteering some hours, please contact Rangituaia at the office on 07 573 5314.

Poututerangi 2023

ENVIRONMENTAL



Capability and knowledge development

With every relationship, and project comes new knowledge and capability. Our kaimahi have developed GIS mapping skills, use of Safety APP, scientific terminology, rakau identification, maramataka monitoring tools, tohu, habitat, and ecology systems. Adding to all of that is formal training. Watana and Rob have enrolled with Awanuiarangi to complete a level 5 Diploma, Te Aka Putaiao, while Ngarohaere and Luke have enrolled in gaining a qualification in pest control. Fortunately, a large percentage of the course is practical application in the field, and or online with periodic noho. This will enable them to use their current mahi as an extension of their learning requirements..



Bio-Genetic conference - Summer Internship

Rangituaia and Rob Peake took up the invitation to join the Summer Internship Indigenous Genomics Conference this year. SING is a week long workshop and mentoring that covers technical and laboratory skills in genomics, as well as ethical and social implications of genomic research for indigenous peoples.



Our kaimahi expressed fascination as to this type of research, and moreover what that means from a cultural perspective for Maori into the future where climate change predicts heavy impacts on our environment and taonga species.

Poututerangi 2023

ENVIRONMENTAL



Forums and Boards

Mokoera represents Waitaha interests on some major projects, in particular waterways within our area of interest.

Waiari

Mokoera participates on the Waiari advisory forum to ensure the cultural protection of the Waiari, and risk minimization. Our focus remains on the long term impacts to the Waiari, and are yet to be convinced that the volume of water take to service the whole of the Papamoa coastline, including Te Tumu will have a minor effect. It is important to remain at the table on these issues. Mauri modelling for monitoring the Waiari has been ongoing. We will continue to impress our active participation in this space.



Te Maru O Kaituna (TMOK)

The river management plan continues to be rolled out, with the implementation of the Pataka kai project, and Te Pourepo wetland revitalization project. Waitaha rotation period has expired, however Tapuika Board has indicated they are keen to discuss the joint appointment to the TMOK board. This is likely to be added to our Board agenda in the coming month.



Te Uepu

Both Mokoera and Maru participate on Te Uepu committee. This forum is dedicated to Te Uku O Takakopiri, (Papamoa Regional Heritage Park). Planning for a Umu Kohukohu Whetu/Matariki ceremony upon Te Uku a Takakopiri for this year is underway. This will be around the same time as the opening for the new carpark and walking tracks to the summit

Poututerangi 2023

ENVIRONMENTAL



Submissions

RMA Reform

A joint submission has been made to the Environment Select Committee in response to the (a) Natural and Built Environment and Spatial Planning Bills. These bills will replace the current RMA. The joint submission includes, Te Kapu O Waitaha, Te Tahuu o Tawakaheimoa Trust, Ngati Pikia iwi Trust, Tapuika iwi authority, and Ngati Whakaue ki Maketu.



Foot path extension - Manoeka Road

Discussion with whanau highlighted the desire to have foot paths extended along Quarry Road from eastpack to Manoeka. . Mokoera approached council with a submission of which council is undertaking considerations on how it might fund that request.

Water pipe upgrades - Manoeka Road

Mokoera and Veroni, responded to the ongoing issues experienced by a number of whanau residences along the Road. Whanau either had no water, cold water that ran hot, lack of pressure among other issues. Following meetings with council and follow ups, we have been advised that the pipe upgrades have at last been completed.



Flood erosion- Te Raparapaahoe

Remnants of cyclone Gabrielle are evident in the flood erosion located below the marae. BOPRC will undertake removing orchard timber waste blocking the waterway. While this will help, it will not be enough to address long term erosion vulnerability. Further meetings will be held with councils to ensure their commitment to remedial action.

Poututerangi 2023

ENVIRONMENTAL



Papamoa Coastal walkway

TCC has plans to establish a coastal walkway between Te Repehunga and Talyors Reserve. Mokoera and Maru have been adding Waitaha input and narrative that will be established along the proposed board walk. Other input has been to ensure access from the walkway to the akau encourages public access to the beach does not compromise dune resoration areas.



Whale fatality

Mokoera joined others at Te Tumu in the poroporoaki of a southern bottle nose whale. These occurrences are always heartfelt, and emotional.

Cultural Monitoring

Wharekonehu has continued to provide cultural monitoring involving urban development. He is currently monitoring in Papamoa.



Plans to grow cultural monitoring capacity and capability is a priority focus for the next fiscal year. Training will consist of workshops as opposed to wananga.

Key aspects will be Waitaha area of interest, waahi tapu locations, health and safety, protocols, and legislation.

A link will be made available to register interest between July and August.

Poututerangi 2023

Education



Grants & Scholarships

Education grants have now closed for the 2022/2023 financial year. We are pleased to announce that this year 130 individuals were funded through the Hakaraia Education Endowment

Other grants paid were for; School uniforms, licenses, cultural and local programmes.

Waitaha Curriculum

The education curriculum project is led by Ray Wihapi. The roopu that was established last year to progress this kaupapa continues to have input in support of achieving outcomes.



Training and employment

We have continued to promote apprenticeship, training, and employment opportunities shared by our networks. Information is also provided to Te Puke High School Careers for inclusion in their School Newsletter.

GOOD NEWS STORY

Our good news story this month features Travis Moke. Travis was part of the first Partnership Scholarships between the Trust and University of Waikato. Travis graduated last year achieving a Bachelor of Science degree, with a double major in Environmental Science and Chemistry. We understand that Travis was offered a position with Tainui Regional Council. Tauke Travis!!!