



TE KOPUROA ORCHARD UPDATE

A bumper crop forecast from the market for the year remains positive and the lift in final Orchard Gate Returns last season are expected to increase this season, a reflection of delivering a great taste experience and quality fruit.

Preparation for Harvest is well under way with the crops producing positive results thanks to the favourable weather and growing conditions, in particular the results are reflected in the Gold 3 Crop. The hayward crop is variable typical of the variety. All measures are in place to ensure the best results with maturity monitoring which is a key focus at the moment when it comes to KiwiStart.

Historically Te Kopuroa Orchard is picked early in the season for both crops which benefits from a healthy experienced labour force which our Orchard Managers utilise to ensure the best results on Orchard, reflected in the results with minimal rejects and high Class 1.

Eastpack have planned ahead for the lift in volume and labour. Their capacity has increased with upgrades to automation utilising the latest in robotics for box filing, packaging and palletising and more cool storage solutions requiring less labour and have multi strategies to ensure our fruit is packed and submitted to Zespri.



WAITAHA HOUSING SUMMIT

The Housing summit weekend provided the opportunity for whanau to come together with various government agencies and organizations to gain an understanding on building on their whanau whenua, funding, finance, rent-to-own options and support services available.

On Thursday 22nd April 2021 10:30am to 01:00pm at Hei Marae, Te Puke Kainga Ora and ASB bank will present on:

- Kiwisaver
- Finance Options
- Home Ownership

Based on whanau consultation and the priorities identified from the Summit workshops will be developed specific to the needs of our Iwi to assist whanau in taking the next steps toward achieving their goals.

If you have any questions please email

events@waitaha-iwi.org.nz

Tele: 07 573 5314

Mobile: 022 035 8792



WAITAHA DRIVERS LICENCE

The Waitaha Charitable Trust has supported a total of 28 Waitaha whānau in gaining their drivers licence in the month of March;

Learner licences	16
Restricted licences	6
Full licence	6

We would like to acknowledge Licence2Drive who deliver the learners licence course to our whānau and also offering to run one of their courses from our office for which the next full intake of a further 9 whānau members will be undertaken on Monday the 22nd of March 2021



TE HOUHOU HEALTH SCHOLARSHIP - FEEDBACK

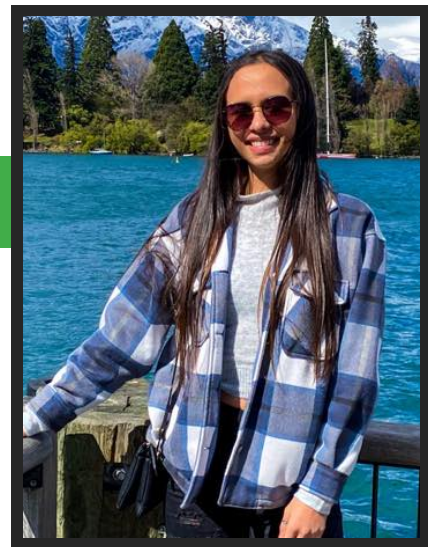
Aaliyah Thocolich is one of two recipients to receive the Te Houhou Health Scholarship for 2021. Aaliyah is currently in her third year of completing a Bachelor of Physiotherapy at the University of Otago.

She had some great korero and advice for those thinking about studying in the health sector;

“My advice to those considering university would be to study what you enjoy. There is no pressure to start studying as university will always be there. Studying away from home and away from whanau is such a huge commitment and it can get challenging at times. My advice would be to make those connections, engage with the Māori student support networks available to you and make the most of every learning opportunity. Stay committed and enjoy the journey!”

“New Zealand's health care system is made up of only 2% Māori. The more Māori students that can graduate from university with a degree in health the better it will be to help shape the future for our people and those thinking of studying in career in health. Our people will also have more role models to discuss what they could expect if they aspire to pursue a health based career. In tertiary settings such as hospitals, physios and doctors work closely together. For example, a doctor undergoes surgery on a patient and the role of the physio is to help get the patient mobile again post operation. Both practitioners play an important part in the patients recovery and overall well-being. Māori treating Māori will allow our people to feel more comfortable during consultations as they will be able to connect better. Ultimately, the aim is for our people to have a positive experience when receiving health care which hopefully should lead to better adherence to treatment, and overall better health outcomes.”

We wish you all the best in your 2021 tertiary journey Aaliyah and we are excited to see what lies ahead for you.



OUR COMMERCIAL UPDATES



PROPERTY AND LAND DEVELOPMENTS

A key focus for us has been to maximize the value of the current Trust assets. The assets that are not currently returning anything are costing us in rates, and therefore we need to do something to generate cash so that it pays its way and returns a profit for Waitaha. The importance of this is to make sure we are financially sound, and can continue to build up our asset and money resource to support the iwi in the now and future. Those assets are Whitikiore at Papamoa and Hinepoto located at Lenihan Drive.

The Directors have opted for land retention on both blocks. That means there is no intent to sell the land. Together with Veros, the Directors will be working through proposals that potentially could bring lease income, and future ownership of a lifestyle village.

We will keep you posted on this.

RECENT LONG TERM INVESTMENT

Managing assets for the iwi also means we have to manage risk. We cannot have all our eggs in one basket, in case of economic changes. In other words, if markets fall, the investment takes a hit, likewise if the market increases the investment will likely increase along with it.

Our way of managing this is we have set targets to make sure we have a spread of investments across different classifications. These are properties that give us a lease, term deposits, and direct investments.

We have recently invested \$3 million with a 7% return. This investment is with HAPAI, who specialize in commercial properties. The investment is a partnership shared with an iwi collective. The collective put money into the purchasing of buildings in the Hawkes Bay, Dunedin, Auckland, and Christchurch. This investment means we get a steady revenue stream and if we decided to exit, we get a share of the current value of the property proportionate to our investment.

To give an idea, current banks term deposit rates are below 1% return. We are happy to have been able to secure a share with HAPAI offering by far a better return.



HOUSING SUMMIT

The recent housing Summit was attended by 85 people over a course of two days. Various presentations gave insights explaining;

- new law changes for multiple owned land, and occupation by the Maori Land Court
- pathways to papakainga development on Maori owned land by Te Puni Kokiri
- affordable housing options through relocatable housing options presented by HOUSEME
- rent to own options by the Doing Good foundation
- what whanau need to do and can expect in respect of cost, documentation, and applying for loans presented by Rondell Reihana
- and consents presented by Rachel Davies of Western Bay of Plenty District Council.

We noted many experiences and barriers that came from the floor, as well as opportunities, and a starting point for our next steps to assist whanau. Following the next and final presentations by Kainga Ora, ASB bank will be held in April 22nd. Following this we will set a date to workshop with whanau their needs, aspirations, and plan a housing strategy to navigate potential housing solutions.

Please watch this space, keep coming to the hui. Housing is not an overnight process, but together we will get there.

TE TAIAO

Lots has been happening in our environmental space. Much of our work has been focused on long terms plans by councils and submissions. We get involved in this to make sure we are included in the discussions around what happens in our “area of interest” through the Waitaha Treaty Settlement Claim legislation.

Maungaruahine is a Waitaha Heritage pa, legislated as a conservation area. The maunga was returned in our Treaty Settlement Claim. When it was returned, it meant that DOC was no longer responsible for its care. This means we have to find our own resourcing to manage going forward. We have also just signed off the Nature Fund grant for Maungaruahine. We will be recruiting for two positions shortly. This will be one project that will be included in a revised five year Taiao plan. The kaitiaki of Maungaruahine will be the management of invasive pest plants, pest control, tracks, and will include matauranga knowledge in respect of rongoa species, tohu whenua, tikanga, and history. Further there will be some formal training offered to ensure Health & Safety standards.

The Trust is responsible for the project. If you are interested please contact the office. Paid positions will be advertised by the end of the month. These will be fixed term for three years to being with.

Our vision is to establish a Taiao unit responsible for monitoring our own waterways, collecting our own data, and exercising our own ability as kaitiaki. If you wish to have input or be involved please contact Whareoteriri on 07 573 5314 or whare@waitaha-iwi.org.nz

TE UKU O TAKAKŌPIRI

We will be reviewing the MOU for the Regional Heritage Park between BOPRC and the iwi advisory, one of which Waitaha is involved. The reason for this is to establish access by the Trust without having the need for permissions by the council when we need to use the Road. Our koeke in particular would be challenged by walking the track to connect with their own ancestral lands, and further, when we have our own wananga, and events.

