



TE KŌPUROA ORCHARD UPDATE

There is plenty of good news to share. We believe a continued focus on sustainable growth to meet the targets set are achieved and work closely with the Orchard Managers and our Advisors to monitor the Orchard progress. Good progress has been made with completing the Gold3 canopy fill which will help improve the yields for 2021 Harvest.

In comparison to the previous 2020 harvest season the OGR is expected to be slightly higher due to market demand. Fruit production is also up from last season mostly due to favourable weather conditions this season.

Zespri remains confident that the demand for kiwifruit will continue to grow on the back of ongoing investment in developing markets and sales channels.

We continue to monitor Te Kōpuroa Orchard and collaborate with the Industry closely to keep abreast of regulation, labour and the market.

WAITAHA MARAMATAKA

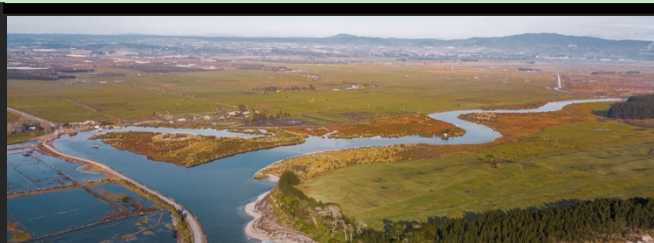
A 12 month Maramataka will be distributed to the iwi by the end of this month. It will include all wananga, programmes, events, and meetings. Copies will be delivered to koeke.





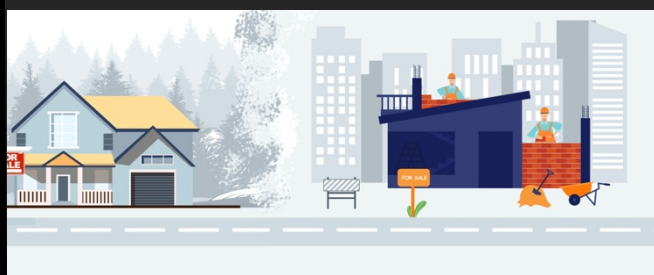
PRIVACY ACT CHANGES

The purpose for keeping a tribal register is for election purposes. We also use the same information for supporting whanau with scholarships, and through the last COVID lockdown where we were able to get food parcels to people. With the new Privacy Act changes, we have had to develop a policy that promotes how and why we use and collect membership record information. Following legal



TE MARU O KAITUNA

Whareoteriri has been nominated to represent Waitaha interests on the Kaituna river Authority Board. Rotation is every three years.



WAITAHA HOUSING SUMMIT

As a result of discussions with whanau, housing on whanau lands was a priority. For this purpose a starting point will be the Housing Summit which will be held 13th and 14th March. Speaker and presenters have been confirmed



POU ĀRAHI TAI AO

NEW APPOINTMENT FOR THE ENVIRONMENTAL UNIT

The Trust welcomes Whareoteriri to the position of Pou Arahi Taiao. He will be responsible for environmental strategy on behalf of the Trust. This also means that we will be in a better position to fulfil our obligations across local government and other forums where Waitaha has is an affected party in respect of our taiao.

IWI APP DEVELOPMENT

The development of our own iwi app is in progress. This is necessary to ensure we are in a position for electronic voting by 2022, as per the mandated Trust Charter. We will be rolling out more information about this mahi over the next 12 months.





ENVIRONMENTAL PLAN AND MAUNGARUAHINE

An environmental plan will be developed to incorporate Trust strategies and responsibilities in respect of Waitaha legislation. This includes a plan for Maungaruahine. Funding has been approved by the Bay Alliance Board – Nature Fund to resource employment for 2 people over the next three years for Maungaruahine.

An ecological assessment including GIS mapping of pest plants has been completed. Pest control will become part of this plan and project.

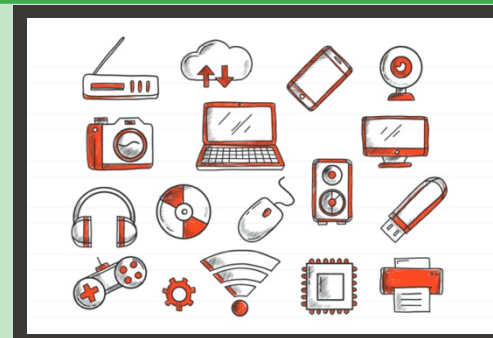
Included in the environmental plan will be a specific focus on encouraging young people to become involved in kaitiaki, build matauranga knowledge, receive formal and cultural knowledge training. The outcome we seek is that we are more proactive in monitoring, care and the wellbeing of the environment.

Examples were provided of how private landowner and developments have impacted on rivers, and wetlands affecting the survival of species that were once part of customary harvesting/gathering



KOEKE TECHNOLOGY TRAINING

A workshop has been planned to help koeke with the use of their cell phones. This is scheduled for May 2021, and will be held at Te Kapu O Waitaha offices. More information to register for this will be out shortly.



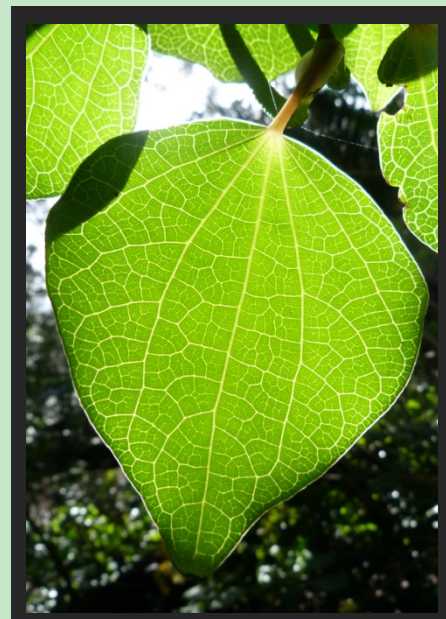
TE REO OKERE PROGRAMME

Te Reo Okere has been developed in response to the identified aspirations of whanau following meetings in relation to the WCT Statement of Intent discussions. The programme is comprehensive with an intent to encourage cultural leadership, and matauranga. It incorporates mihi, karakia, land marks, events, whakapapa, whakatauki, kii waha, waiata, mau rakau, site visits, history, reo me nga tikanga, and aspects of oratory. Tutors for this programme are Whareoteriri Rahiri, Te Kanapu Anasta, Mokoera Te Amo, Maika Te Amo. Te Reo Okere Wananga will run from March – October, and consists of one noho per month, running from Friday 6.00pm – mid-day Saturday. A link for registrations will be available in the next two weeks.



MATARAUNGA, HEALTH & WELLBEING

A health & wellbeing summit is being organised to encourage self-management of health, increase knowledge of traditional remedies, managing wellbeing in te ao hurihuri, and the strength of whanau/kinship in relation to wellbeing. An additional topic is suicide. The full programme will be released in due course. A rongoa hikoi will be held the 2nd day of the summit followed with a blessing at the awa.



UPDATE YOUR RECORDS

To keep up with up and coming hui, events and all grant information it is important that we have your current contact information. These are the following ways to let us know your new contact details:

1. Email: info@waitaha-iwi.org.nz
2. Phone: 07 573 5314
3. Website live chat: www.waitaha-iwi.org.nz
4. Facebook Messenger: Te Kapu o Waitaha Facebook Page



2021 HAKARAIA EDUCATION RECIPIENTS

The Waitaha Charitable Trust distributed Hakaraia Endowment grants and scholarship to 29 Waitaha students for the year 2021.

- Hakaraia Education Grants 21 recipients
- Te Houhou Health Scholarship 2 recipients
- Waikato University Partnership Grant 5 recipients
- Discretionary Grant 1 recipient

The following grants are still currently open for applications and will close June 30 2021.

- Discretionary Grant
- Trade Apprenticeship Grant



WAITAHA CHARITABLE TRUST STATEMENT OF INTENT

WAITAHA CHARITABLE TRUST STATEMENT OF INTENT – WHANAU ENGAGEMENT HUI

The delivery of the Statement of Intent to the iwi was completed in late 2019 with a series of whanau engagement hui that followed. Through those hui, whanau prioritised the following for the upcoming series of hui;

- Whanau housing
- Education
- Health
- Cultural competency

We will continue the whanau engagement hui beginning with housing and education priorities on the 27th of February 9am -12pm Hei Marae.

