

PANUI - SEPT-OCT 2021



TE KAPU Ō WAITAHA
He Ao Hou

KEY UPDATES

STATEMENT OF INTENT

Huge thank you to all those who were involved in providing feedback and input to Waitaha Charitable Trust Statement of Intent. This is now completed, and will be implemented over the next 5 years.

Education grant changes

New, is that the Trust has approved inclusion of primary through to secondary school education costs which can be applied for under the Charitable Trust Discretionary Grant. All applications will be assessed in accordance to normal criteria and policy. Grants will be available until the funding allocation for the year is fully expended. This does not include sport and recreational due to the Charities Commission regulations.

Housing

A housing plan is being developed for Waitaha. A dedicated position will be advertised in the New Year to facilitate and implement for housing outcomes as expressed by whanau. Those are homes on own land, and housing repairs.

Environmental

A Full time position Fixed term (2021-2023) will be advertised 19TH October. This position will replace the role that was previously held by Whareoteriri. The role is fully funded by Jobs for Nature (DOC)

PANUI - SEPT-OCT 2021



TE KAPU Ō WAITAHA
He Ao Hou

SCHOLARSHIP AND GRANT (contributions)

DISCRETIONARY GRANTS

Registered beneficiaries may apply for a grant to **assist** with the following costs;

- (a) Motor vehicle licenses (Learners, Restricted, Full, other)
- (b) Primary - Secondary; school uniform, exam fees, extra curricular learning (excluding sports and recreation)
- (c) Exclusive to Waitaha Kohanga Reo mokopuna enrolled to attend a kura reo at the age of 5yrs. Kura manaaki package (Uniform, Bag, Stationary).
- (d) Waitaha wananga/leadership programmes or alike
- (f) Other; this is at the discretion of the committee for an education related cost not listed above

TERTIARY GRANTS

Registered beneficiaries may apply for a grant to **assist** with the following costs;

- (a) Apprenticeship tools, and fees cost
- (b) course fees that are not already funded by government under the free fees scheme, or where fees have been fully paid by a scholarship that has already been awarded in the current year of study.

TRUST PARTNER SCHOLARSHIPS

- (a) Te Houhou Health Scholarship
 - (b) Victoria University Scholarship
- (criteria for these can be found on the Trust website)

PANUI - SEPT-OCT 2021



TE KAPU Ō WAITAHA
He Ao Hou

SCHOLARSHIP AND GRANT APPLICATIONS

MAKING AN APPLICATION

Registered Beneficiaries can make an application by any of the following ways;

- Website www.waitaha-iwi.org.nz
- Te Kapu O Waitaha APP

OPENING AND CLOSING DATES

Tertiary grants and scholarships open November 15th 2021, and close in 17 January 2022 the following year. All other grants are open all year.

COMMITTEE DECISIONS

The committee reserves the right that all decisions once made are full and final.



PANUI - SEPT-OCT 2021



TE KAPU Ō WAITAHA
He Ao Hou

ENVIRONMENTAL UPDATES

KAITIAKI - MAUNGARUAHINE

Trapping continues as with weed control on Maungaruahine. The emphasis of this mahi is not about the number of rats, or possums, it is about the well-being of the ngahere and wildlife. One of the biggest challenges has been the eradication of weeds. The biggest threat is Taiwan Cherry, which is easily spread by Tui who feed on these, and the other is wild ginger. A future working bee will be organised to help Ngarohaere and Tiare in getting rid of these weeds off the maunga. It is a huge job, one that needs many hands to help.

DOC is also running a media report for the Minister on this project.



MAHI FOR THE NEXT 3 MONTHS

- Landscape plan for future opportunities
- Tracks and signage
- Explore partnership with others doing conservation training
- continue trapping, and recording
- framework to film and document the mahi and journey over the next 3 years

PANUI - SEPT-OCT 2021



TE KAPU Ō WAITAHA
He Ao Hou

Maungaruahine Pa site
Photograph 1943
Prior to regeneration of ngahere
(Courtesy of DOC)



PANUI - SEPT-OCT 2021



TE KAPU Ō WAITAHA
He Ao Hou

ENVIRONMENTAL UPDATES

TE PAPA ATAWHAI

Discussions with Tracy Mezger from DOC continue, with the latest discussions in helping us co-ordinate surveillance to determine if kiwi are present on Maungaruahine. It is currently the breeding season for kiwi.

Raponi has also supplied images of Maungaruahine Pa site, Ohui, and Takarangi from the early 1940's. You can clearly see the pa site location. Further lidar images will be supplied and show provide 3D imagery of the landscape. Tbs will also inform a future landscape and track plan.

LINKING UP WITH OTHERS

There are a number of conservation programmes and projects happening via other parties such as WhakakahaTrust, Otanewainuku Kiwi Trust, Kaima Mamaku.

Further conservation training is being run by Bay Conservation Alliance.

There is opportunity for us to link up with an overall conservation/Kaitiaki plan for all Waitaha conservation areas, including seeking funding for employment. We will start those conservations and planning for the New Year.

PANUI - SEPT-OCT 2021



TE KAPU Ō WAITAHA
He Ao Hou



COASTAL MARINE HIGH COURT HEARINGS

The High Court hearings for the Coastal Marine application by Nga Potiki is into its second week. The application area for marine & coastal title by Nga Potiki is from Otira through to the Kaituna and 12 nautical miles out, whereas the area of coastal marine title application for Waitaha is from Mauao to Maketu. Below is the map for Waitaha as submitted to the Court. There are a number of iwi applications for the same area, so multiple overlaps. The hearing is over 6 weeks.

The Solicitor for the Trust on this matter is Curtis Bidois, Director and partner of Morrison Kent, Rotorua. Giving evidence for Waitaha will be Maru, supported by Josh Te Kani. A big thanks to all those who helped by completing the survey in August in respect of customary fishing along the coast, this has been helpful in building our case. We are uncertain of the outcome for Waitaha given we entered as an interested party. These proceedings may however help with our actual application which is yet to be heard in the Crown proceedings. No date has been given for that at this time.



PANUI - SEPT-OCT 2021



TE KAPU Ō WAITAHA
He Ao Hou

ENVIRONMENTAL UPDATES

TE UKU O TAKAKOPIRI

Wharekonehu will bless the site for the new carpark and entry to Te Uku O Takakopiri (Papamoa Regional Park), Monday 11th October.

Aroha Ririnui is the appointed cultural monitor for this project .

THREE WATERS

Debate continues between Council in respect of the proposed new Authority which the Crown is setting up to regulate, storm water, waste water, and drinking water supply. This essentially means council will no longer have the regulatory authority. We will continue to participate to see how iwi are likely to be affected.

IWI HAVE FIRST RIGHT OF REFUSAL TO COUNCIL LANDS

The Trust made a submission to TCC in respect of policy reform with regards to disposal of council lands. This was also widely discussed with further submissions by Te Rangapu (replacing the former tangata whenua) forum. The outcome is that iwi will have first right of refusal to any lands being disposed by Tauranga City Council. This is a first of its kind in the country. So a huge milestone for us as iwi.

OTHER FORUM UPDATES

Mauao, Kaituna, Waiari will be reported at the Hui-A- iwi 19th October by the respective reps.

PANUI - SEPT-OCT 2021



TE KAPU Ō WAITAHA
He Ao Hou



COVID UPDATES

LOCAL COVID CO-ORDINATOR

Te mea tuatahi, na mihi ki a Carliza, Jill, and Kuini for initiating a tono for a local COVID Co-ordinator for Manoeka. From this Hinearoha accepted the mahi to providing support and information for whanau during Levels 3, and 2.

Some recommendations from her report is to look at supporting maara kai (growing kai) by whanau to help during these times, along with other planting. These practises were common back in the day of earlier generations with large whanau, and a good initiative to kick off given it is planting season.

WHANAU LIVING AWAY

With the needs being taken care of locally, the Trust concentrated on supporting those in the priority area being Auckland. We have assisted 17 whanau, and continued to follow up with them. There were many cases of hardship, lost employment, worry for their whanau also living in Auckland, and extra to provide for because they could not return to their homes elsewhere due to lockdown restrictions. Many were grateful for the kai deliveries which they say was really needed to help them get through an already stressful time.

PANUI - SEPT-OCT 2021



TE KAPU Ō WAITAHA
He Ao Hou

COVID INFORMATION

LOCAL COVID INFORMATION AND SUPPORT SITES THAT YOU CAN VISIT OR SHARE WITH WHANAU

<https://temanutoroa.org.nz>

COVID-19 Alert Level 2

We are currently at COVID-19 Alert Level 2. This means that there is a low risk of community transmission. People can reconnect with friends and family, and socialise in groups, go shopping and travel domestically, if following public health guidance. Healthcare and disability services can return to as normal as possible.

Our Clinics Are Open During Alert Level 2

Our clinics are open during the current Alert Level 2. You can come in for appointments, consultations, to receive a COVID-19 test, or be vaccinated against COVID-19.

Our community-based services and mental health services are also operating as usual.

COVID-19

Have you got your jab yet?
Find out what you need to know about the current rounds of Covid-19 Vaccinations and register for your vaccine jab.

[Register Here](#)

Keep up to date with the latest Covid news and information on the Ministry of Health site here.

[Learn more about Covid-19](#)

BAY OF PLENTY DISTRICT
HEALTH BOARD

For more information on the COVID-19 Vaccination or what to do after your vaccination see www.health.govt.nz or;

Call Healthline on 0800 358 5453

PANUI - SEPT-OCT 2021



COMMERCIAL & INVESTMENT UPDATES

TE KOPUROA ORCHARD

While the 2021 year has brought one of the more challenging winter pruning seasons to date, it has still been another successful winter. This winter season has been tough, and the fast-paced spring/summer season quickly approaches. Te Kopuroa Orchard is on track to ensure the best results are produced on orchard for another successful season in 2022.

We work closely with our Orchard Manager to ensure Te Kopuroa is a priority and the KPI's are met and continue to keep on task and work hard in preparation for the challenges ahead.

Talks about employment opportunity for Waitaha in respect of Te Kopuroa will be picked up in November. Those discussions will take place with Prospa, the Trust and third parties. We also think there is a lot more to explore not only isolated to Te Kopuroa, but other orchards, other contracted services, and industry opportunity. Whanau are welcome to approach us with any ideas of their own, including contract proposals.

PANUI - SEPT-OCT 2021



UPDATE ON COMMERCIAL PROPOSALS & COMPANY DIRECTORS

A recent visit happened last month to the very first Retirement Village owned and operated by Karaka Pines in Bethlehem . It was good to gauge the things that they value in terms of landscape, people, and environment.

First impressions was, the immaculate grounds, space between dwellings, and the fact that not all homes were two bedroom, in fact some were three bedroom, and a four bedroom dwelling.

Despite the age of the buildings, the design did not appear outdated at all. With the use of maintenance free materials, such as brick, aluminium joinery, and tile roofing.

There was good communal facilities and each dwelling enjoyed north facing sun, with entertainment areas, and privacy.

The potential partnership and negotiations will continue after now having established three Directors onto the company to progress the commercial strategy.

Appointed Directors for the next 12 months are;

Brad Tatere (re-appointed)

Brad has a range of knowledge and skill ranging from forestry, sub-division and housing development, horticulture, capital investment, agriculture, and has won leadership awards, with a history of Director positions. He is also a descendant of Waitaha.

Tom McClurg

Tom has previously worked with the setting up of Te Ohu Kaimoana Fisheries, worked for the World bank, is highly skilled in the area of strategy, and also is involved in Ngati Mutu Treaty negotiations to name a few.

Frank Grant

Frank is the Board representative Director in a voluntary capacity, and will be replaced through a recruitment process in the coming months.

PANUI - SEPT-OCT 2021

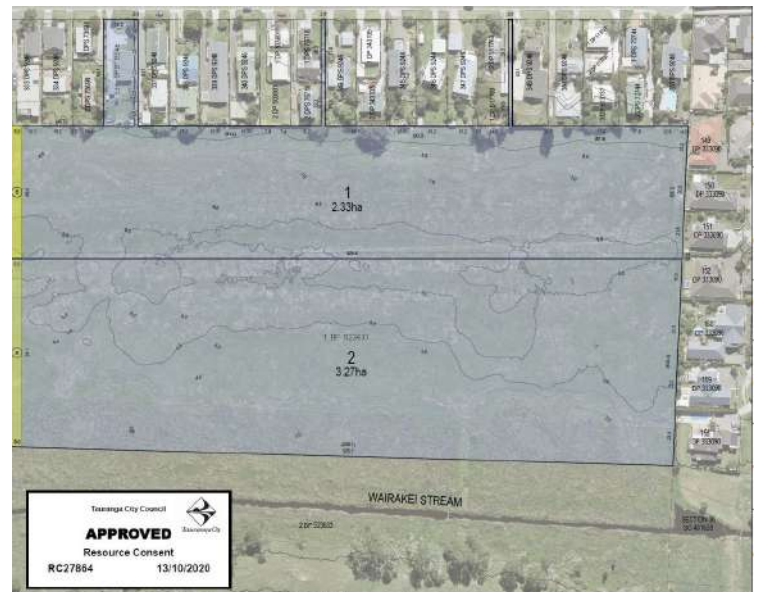


TE HOUHOU

Consenting mahi will continue for the Northern Block. This will include the proposed access being the former 84 Simpson Rd property already acquired by the commercial team.

An archaeology report has been completed for the land, as with concept drawings, and geotech. A response will be required from adjoining neighbours which their properties are located on either side of the proposed access. We expect this may take a some time and is part of the consenting process.

In case you are wondering, an approved sub-division consent provides confidence that houses can be put on the block. This is beneficial to have if we are looking to partner with Karaka Pines, or anyone for that matter.



The above is the layout of the Block, with a consent approval for dividing the land into 2 blocks. Next we will apply for a consent for a subdivision scheme approving houses to be built on the land.

PANUI - SEPT-OCT 2021



TE KAPU Ō WAITAHA
He Ao Hou

WORKSHOPS, WANANGA & TRAINING

WAITAHA TIKANGA

It is proposed that Waitaha tikanga wananga will re-commence in the month of October or thereabouts. The previous wananga were well attended. Exact dates may be provided at the upcoming Hui-A-Iwi.

TE REO OKERE

Te Reo Okere will be winding down shortly, with October being the final wananga for the year.

WAITAHA REO

Dates for the re-commencement of reo wananga will hopefully be provided at the next Hui-A-Iwi. This has been popular among whanau.

OTHER WORKSHOPS

Learner license and koeke digital workshops are planned for the coming year. Dates will be announced on Facebook, the APP panui and Hui-A-iwi next year.



PANUI - SEPT-OCT 2021



TE KAPU Ō WAITAHA
He Ao Hou

Pānui

Notices

Ngā kaupapa

Events

HAVE YOU DOWNLOADED
THE APP YET?

Pūtea
Mātauranga

Grants

Ngā Pōti

Elections

Hopefully whanau would have received a panui in the the mail, to advise that the Trust APP is available for downloading.

If you did not received information on how to download please contact us so that we can provide that for you.

We encourage koeke to arrange an appointment with Ben to assist the download if required. There will be certain information you will need to provide in order for him to complete this. Therefore please call him first to make sure you have everything needed before coming into the office with your cell phone.

A reminder is that elections next year will be electronic, via the web or by your cell phone. It would pay to get this all sorted well before hand if you have not already done so.



FOR ASSISTANCE CONTACT BEN ON 07 573 5314

PANUI - SEPT-OCT 2021



TE KAPU Ō WAITAHA
He Ao Hou

UPCOMING EVENTS

HUI-A-IWI

TUESDAY 19TH October

HEI MARAE 5.30PM

Tour of iwi Assets

Friday 26 November

Bus leaves Hei Marae
9.00am returning back to
marae by 11.30am followed
by cup of tea

(seats are limited, please
ring the office to book your
seat)

MOKOPUNA XMAS AT THE PA

Date: Saturday, 4th December 2021

Time: 10:00am - 2:00pm

Where: Hei Marae

We are 2 months away!!! Save the
date and come along with your
whanau to enjoy a day of mini
carnival games, face painting, food
and prezzies + more!

A flyer will be released soon, keep
an eye out.

AGM

December 11, Hei Marae

Starts 9.00am - 12.00pm
followed by Hakari